

ROUND MANHOLE 72" DIAMETER VARYING HEIGHTS

****MAXIMUM INSIDE MANHOLE HEIGHT = 21'-4". MAXIMUM DESIGN PRESSURE = 24'-8"**. ****

SPECIFICATIONS:

1. JOINTS SEALED WITH BUTYL SEALANT - ASTM C990
2. MONOLITHIC CONSTRUCTION
3. MEETS ASTM C478
4. BITUMASTIC COATING (IF REQUIRED)
5. "O" RING GASKET (IF REQUIRED)
6. 3'-0" ECCENTRIC CONE (IF REQUIRED)

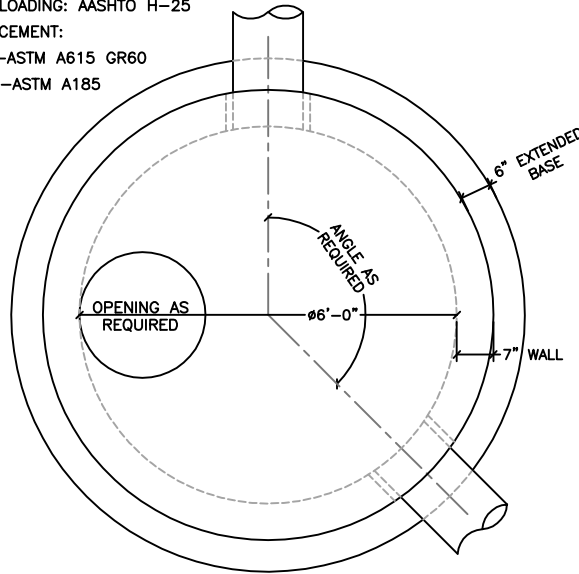
DESIGN CRITERIA:

- CONCRETE: 4000 PSI @ 28 DAYS
 ENTRAINED AIR: 5% - 9%
 DESIGN LOADING: AASHTO H-25
 REINFORCEMENT:
 BAR-ASTM A615 GR60
 WWR-ASTM A185

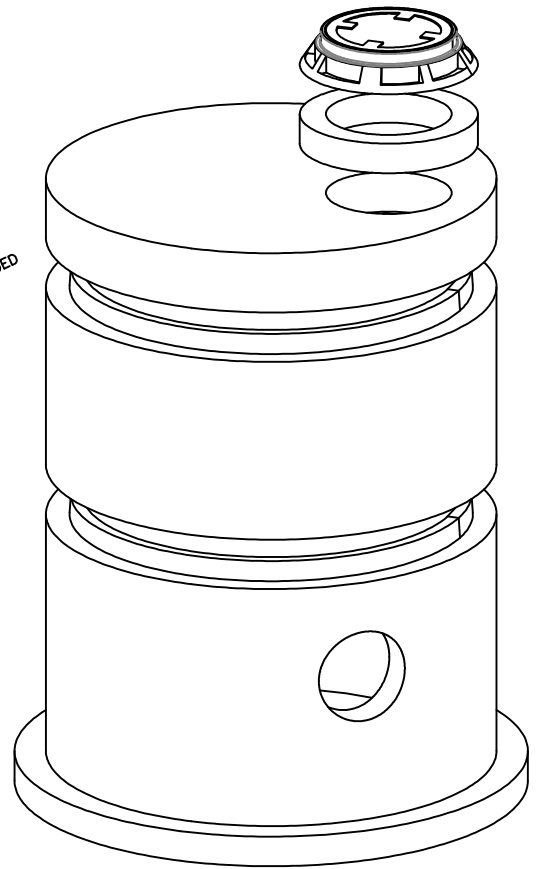
****NOTE: OPENING CAN BE CENTERED OR OFFSET OPENING SIZES ARE:**

- Ø24", CENTERED/OFFSET
- Ø30", CENTERED/OFFSET
- Ø36", CENTERED/OFFSET
- Ø42", CENTERED/OFFSET
- Ø48", CENTERED/OFFSET

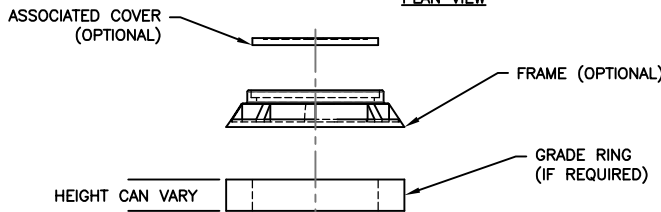
CUSTOM OPENING SIZES ARE AVAILABLE UPON THE CONTRACTORS REQUEST.



PLAN VIEW



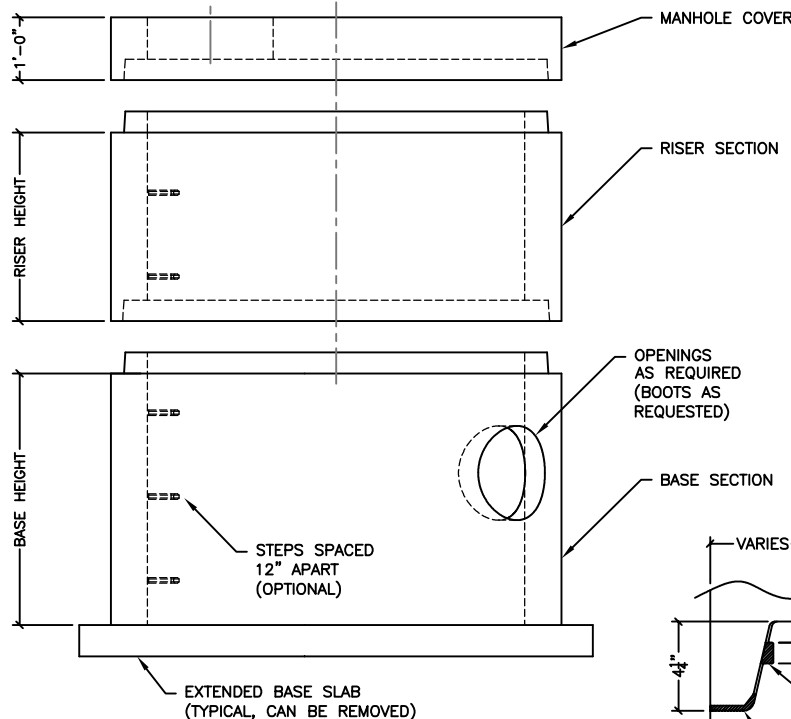
ISOMETRIC VIEW



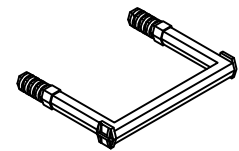
- FRAME & GRATE MODEL NO: _____
- NOT NEEDED

- GRADE RING**
- 3"
 - 4", Ø30" OPENING ONLY
 - 6"
 - NOT NEEDED

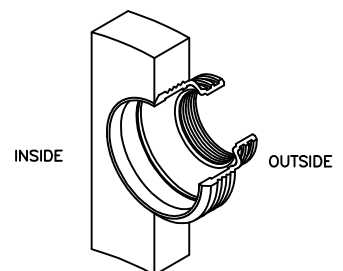
- BITUMASTIC COATING**
- EXTERIOR
 - INTERIOR
 - EXTERIOR AND INTERIOR
 - NOT NEEDED



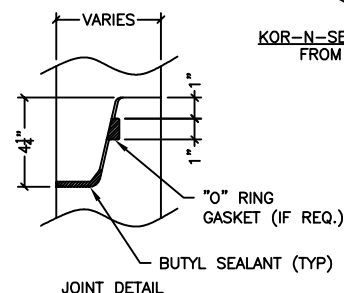
ELEVATION VIEW



**M.A. INDUSTRIES
 MANHOLE STEP
 PS1-PF**



**KOR-N-SEAL BOOTS
 FROM NPC**



JOINT DETAIL

****COVER WEIGHT IS WITH Ø24" OPENING****

MH I.D.	COVER WEIGHT (LBS)	BASE HEIGHT	RISER HEIGHT	POUNDS PER VERTICAL FT
72"	4123	24" TO 60"	12" TO 48"	1822

****BASE & RISER SECTION HEIGHTS IN 6" INCREMENTS****