

## ROUND MANHOLE 60" DIAMETER VARYING HEIGHTS

**\*\*MAXIMUM INSIDE MANHOLE HEIGHT = 21'-4". MAXIMUM DESIGN PRESSURE = 24'-8".\*\***

**DESIGN CRITERIA:**

CONCRETE: 4000 PSI @ 28 DAYS  
 ENTRAINED AIR: 5% - 9%  
 DESIGN LOADING: AASHTO H-25  
 REINFORCEMENT: BAR-ASTM A615 GR60  
 WWR-ASTM A185

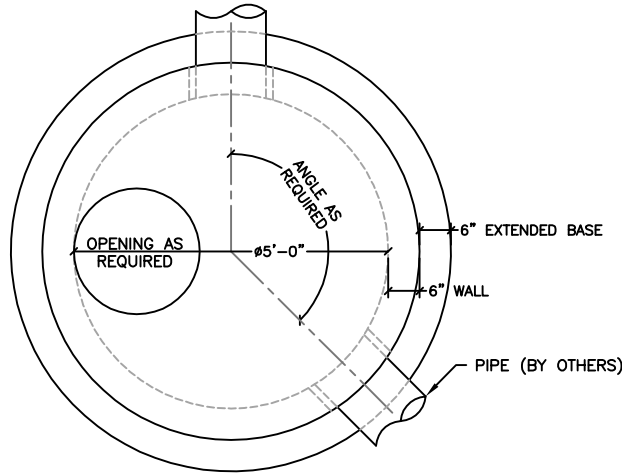
**SPECIFICATIONS:**

1. JOINTS SEALED WITH BUTYL SEALANT - ASTM C990
2. MONOLITHIC CONSTRUCTION
3. MEETS ASTM C478
4. BITUMASTIC COATING (IF REQUIRED)
5. "O" RING GASKET (IF REQUIRED)
6. 3'-0" ECCENTRIC CONE (IF REQUIRED)

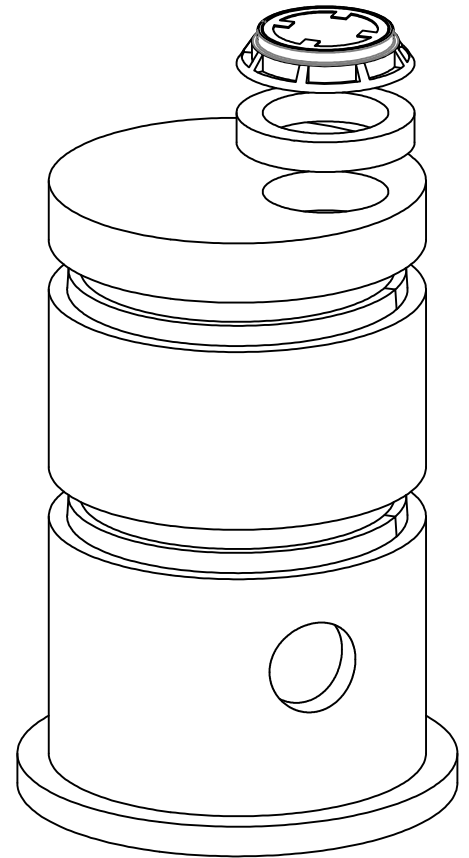
**\*\*NOTE: OPENING CAN BE CENTERED OR OFFSET OPENING SIZES ARE:**

- Ø24", CENTERED/OFFSET
- Ø30", CENTERED/OFFSET
- Ø36", CENTERED/OFFSET
- Ø42", CENTERED/OFFSET
- Ø48", CENTERED/OFFSET

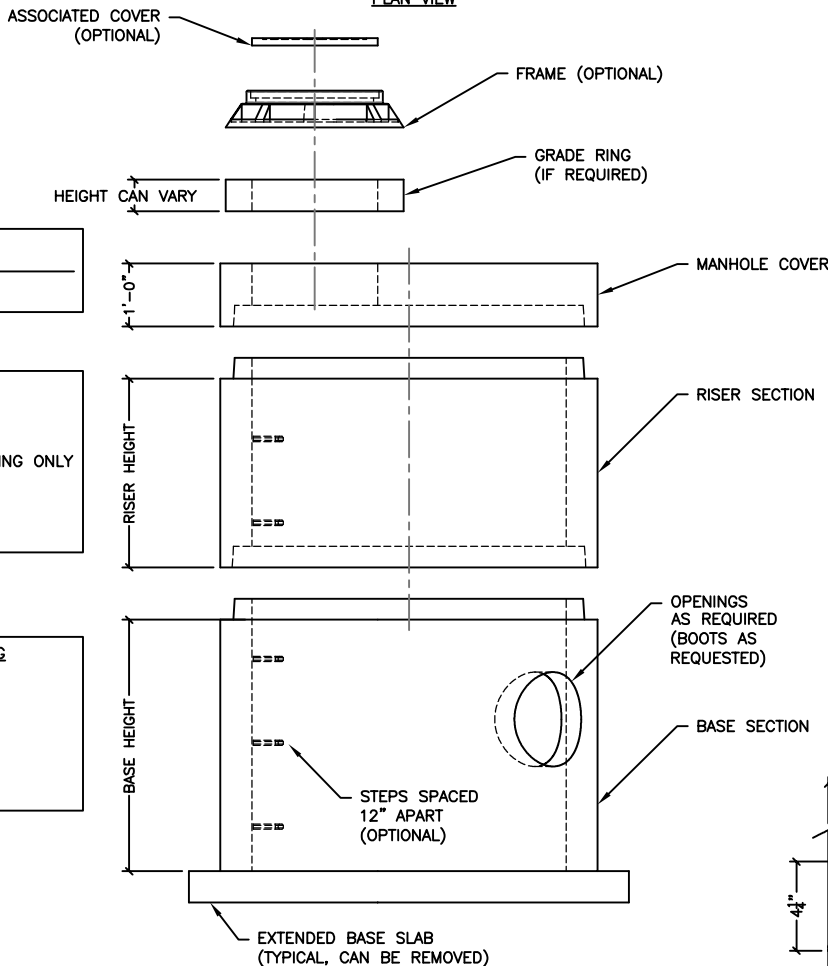
CUSTOM OPENING SIZES ARE AVAILABLE UPON THE CONTRACTORS REQUEST.



PLAN VIEW



ISOMETRIC VIEW

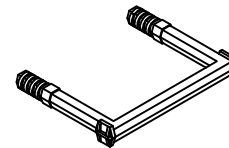


ELEVATION VIEW

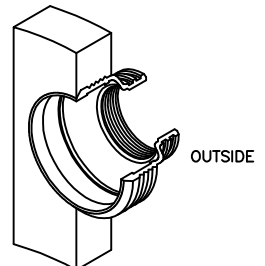
- FRAME & GRATE MODEL NO:
- NOT NEEDED

- GRADE RING**
- 3"
  - 4", Ø30" OPENING ONLY
  - 6"
  - NOT NEEDED

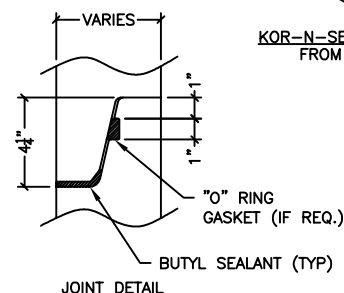
- BITUMASTIC COATING**
- EXTERIOR
  - INTERIOR
  - EXTERIOR AND INTERIOR
  - NOT NEEDED



M.A. INDUSTRIES  
 MANHOLE STEP  
 PS1-PF



KOR-N-SEAL BOOTS  
 FROM NPC



JOINT DETAIL

**\*\*COVER WEIGHT IS WITH Ø24" OPENING\*\***

MH I.D.	COVER WEIGHT (LBS)	BASE HEIGHT	RISER HEIGHT	POUNDS PER VERTICAL FT
60"	3180	24" TO 60"	12" TO 48"	1296

**\*\*BASE & RISER SECTION HEIGHTS IN 6" INCREMENTS\*\***