

ROUND MANHOLE 48" DIAMETER VARYING HEIGHTS

****MAXIMUM INSIDE MANHOLE HEIGHT = 21'-4". MAXIMUM DESIGN PRESSURE = 24'-8".****

DESIGN CRITERIA:

CONCRETE: 4000 PSI @ 28 DAYS
 ENTRAINED AIR: 5% - 9%
 DESIGN LOADING: AASHTO H-25
 REINFORCEMENT: BAR-ASTM A615 GR60
 WWR-ASTM A185

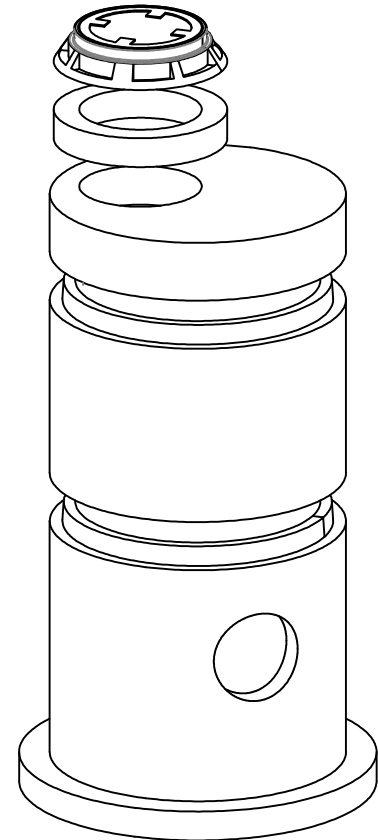
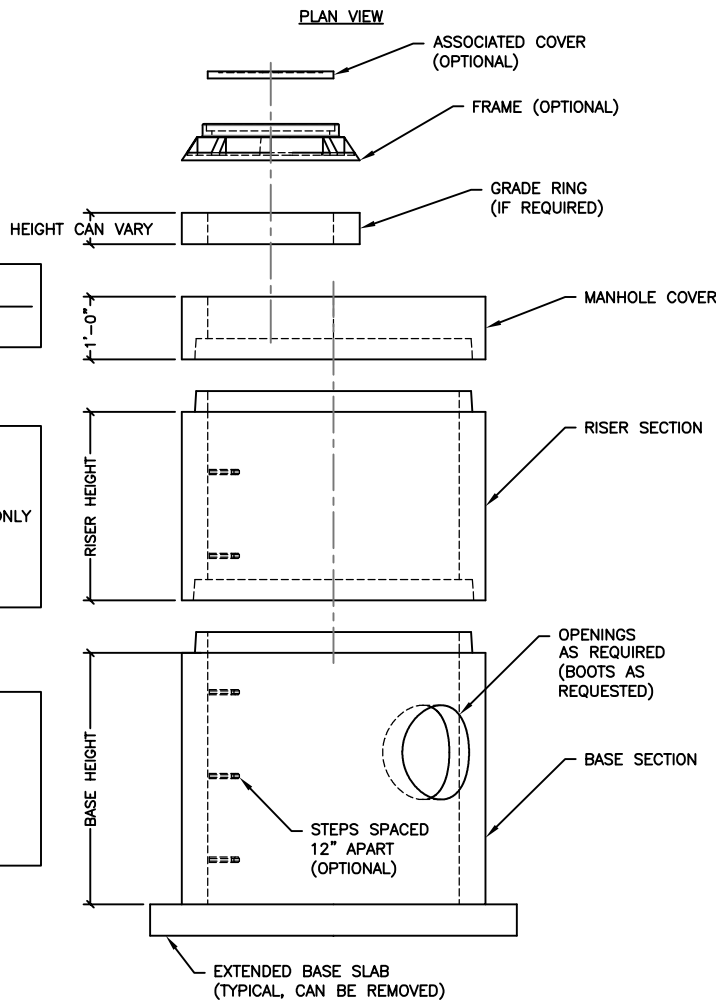
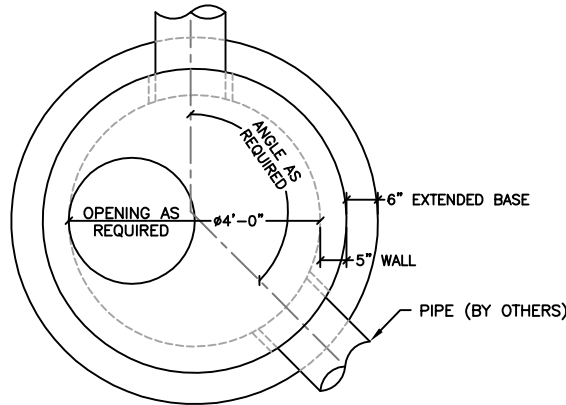
SPECIFICATIONS:

1. JOINTS SEALED WITH BUTYL SEALANT - ASTM C990
2. MONOLITHIC CONSTRUCTION
3. MEETS ASTM C478
4. BITUMASTIC COATING (IF REQUIRED)
5. "O" RING GASKET (IF REQUIRED)
6. 3'-0" ECCENTRIC CONE (IF REQUIRED)

****NOTE: OPENING CAN BE CENTERED OR OFFSET OPENING SIZES ARE:**

- Ø24", CENTERED/OFFSET
- Ø30", CENTERED/OFFSET
- Ø36", CENTERED/OFFSET
- Ø42", CENTERED/OFFSET
- Ø48", CENTERED/OFFSET

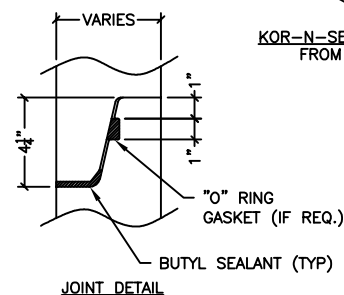
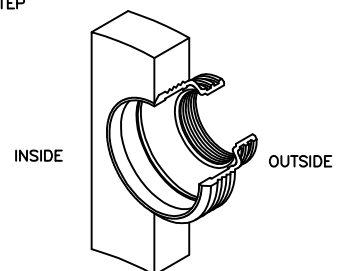
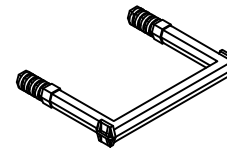
CUSTOM OPENING SIZES ARE AVAILABLE UPON THE CONTRACTORS REQUEST.



- FRAME & GRATE MODEL NO: _____
- NOT NEEDED

- GRADE RING**
- 3"
 - 4", Ø30" OPENING ONLY
 - 6"
 - NOT NEEDED

- BITUMASTIC COATING**
- EXTERIOR
 - INTERIOR
 - EXTERIOR AND INTERIOR
 - NOT NEEDED



****COVER WEIGHT IS WITH Ø24" OPENING****

MH I.D.	COVER WEIGHT (LBS)	BASE HEIGHT	RISER HEIGHT	POUNDS PER VERTICAL FT
48"	1661	24" TO 60"	12" TO 48"	866

****BASE & RISER SECTION HEIGHTS IN 6" INCREMENTS****