



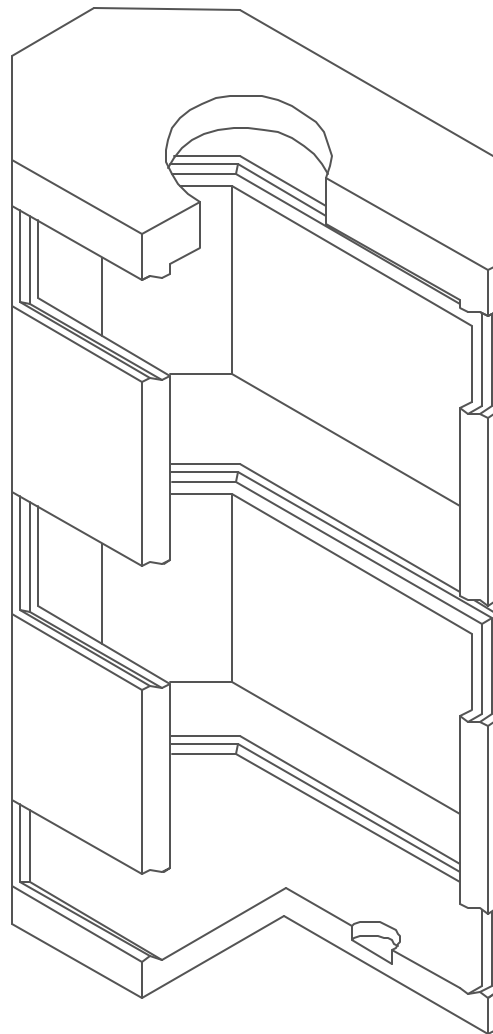
Lakelands Concrete Products, Inc.
7520 East Main St., Lima, NY 14485
Phone: 585-624-1990, Fax: 585-624-2102

Web: www.lakelandsconcrete.com
E-mail: sales@lakelandsconcrete.com

Date: 2/2/01

DWG: MH610

Manhole
6'-0" x 10'-0"





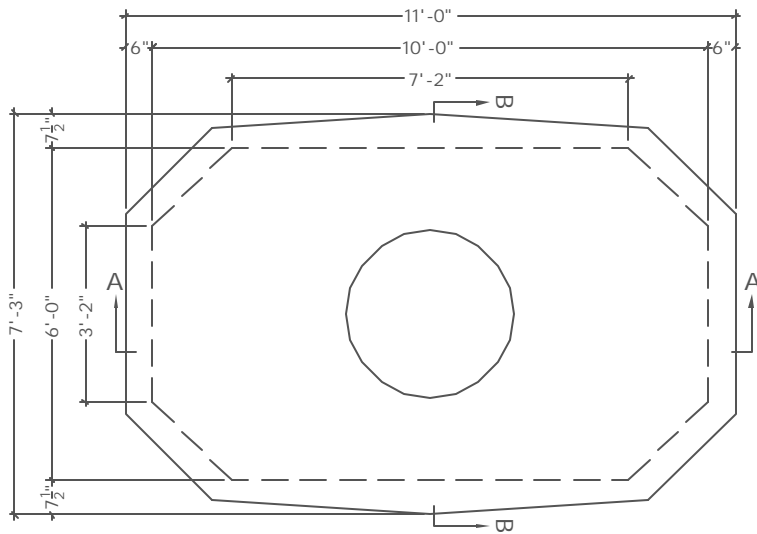
Lakelands Concrete Products, Inc.
 7520 East Main St., Lima, NY 14485
 Phone: 585-624-1990, Fax: 585-624-2102

Web: www.lakelandsconcrete.com
 E-mail: sales@lakelandsconcrete.com

Date: 2/2/01

DWG: MH610

Manhole
 6' -0" x 10' -0"



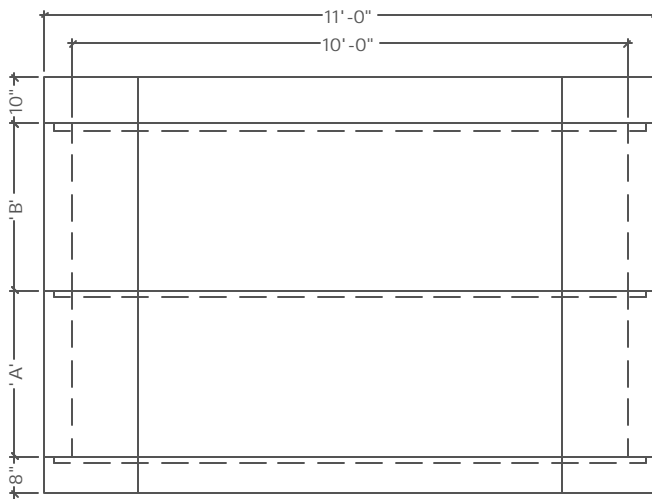
PLAN VIEW

Specifications:

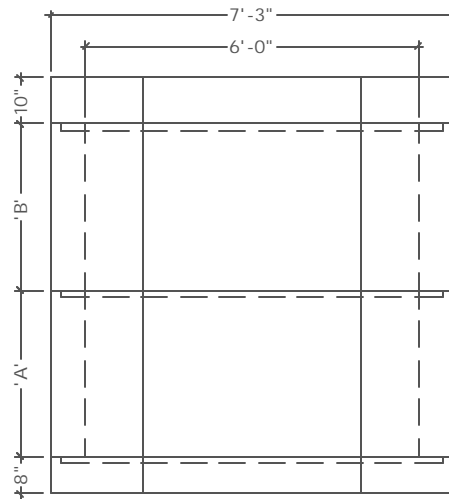
Concrete: 5000psi @ 28 Days
 Entrained Air: 5% - 9%
 Design Load: AASHTO HS20
 Reinforcing: fy= 60,000psi ASTM A615

Notes:

- *Concrete Cover Available With Various Size Openings
- *Various Size Knockouts Or Openings As Required
- *Cast Iron Frame And Covers Available



SECTION VIEW 'A'



SECTION VIEW 'B'

Model No.	A	B	*Height		Weights	Model No.	A	B	*Height		Weights
			Inside	Outside					Inside	Outside	
MH6106	36"	36"	6'-0"	7'-6"	30,525#	MH6108	54"	42"	8'-0"	9'-6"	35,580#
MH61066	42"	36"	6'-6"	8'-0"	31,830#	MH6109	54"	54"	9'-0"	10'-6"	38,025#
MH6107	42"	42"	7'-0"	8'-6"	33,135#	* Additional Heights Available Per Customer Specifications				Cover	9,000#
MH61076	54"	36"	7'-6"	9'-0"	34,275#					Base	7,125#