



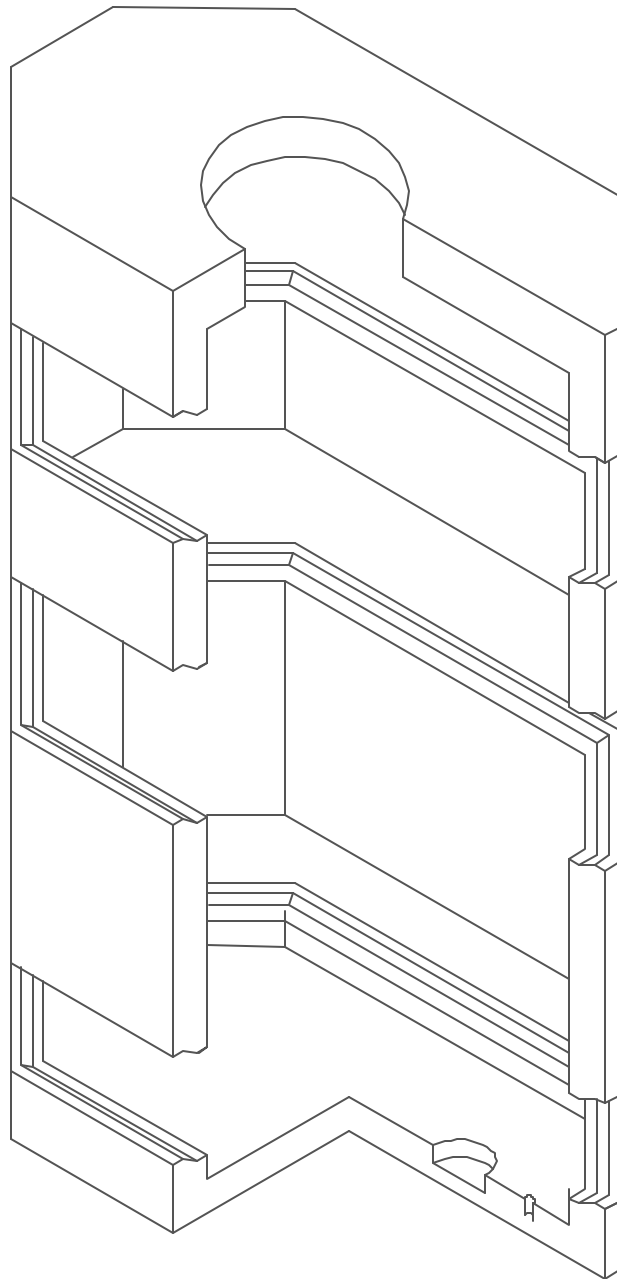
Lakelands Concrete Products, Inc.  
7520 East Main St., Lima, NY 14485  
Phone: 585-624-1990, Fax: 585-624-2102

Web: [www.lakelandsconcrete.com](http://www.lakelandsconcrete.com)  
E-mail: [sales@lakelandsconcrete.com](mailto:sales@lakelandsconcrete.com)

Date: 2/2/01

DWG: MH479

Manhole  
4' -0" x 7' -9"





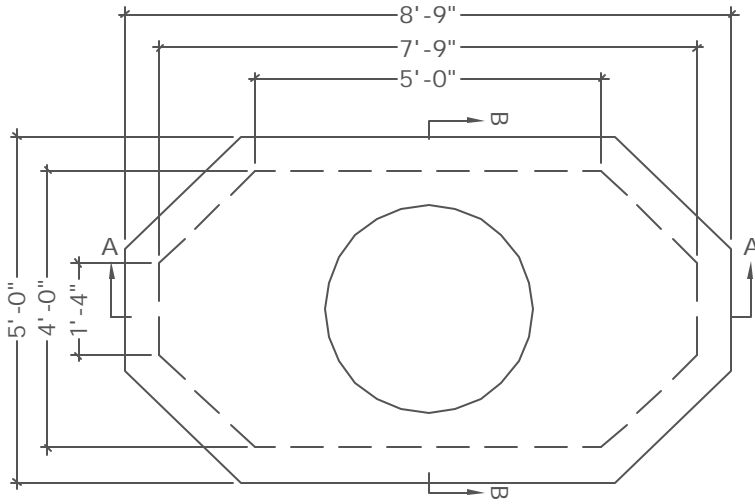
Lakelands Concrete Products, Inc.  
 7520 East Main St., Lima, NY 14485  
 Phone: 585-624-1990, Fax: 585-624-2102

Web: www.lakelandsconcrete.com  
 E-mail: sales@lakelandsconcrete.com

Date: 2/2/01

DWG: MH479

Manhole  
 4' -0" x 7' -9"



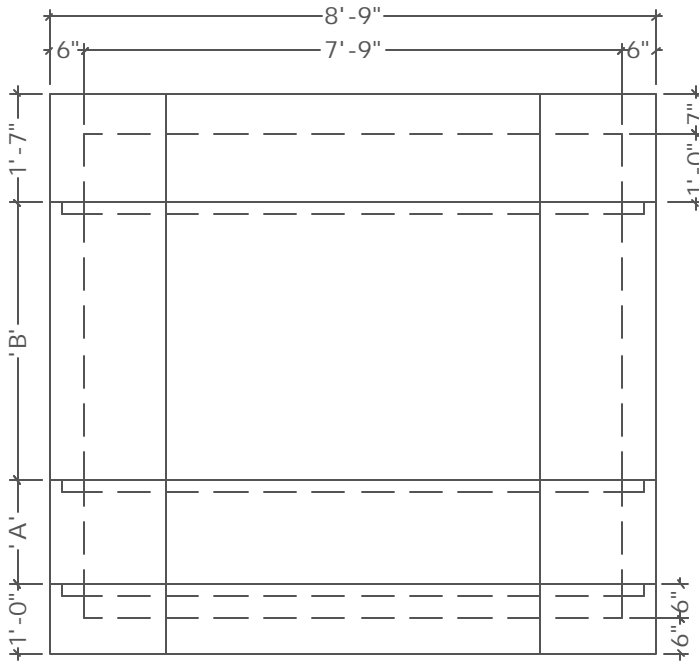
PLAN VIEW

Specifications:

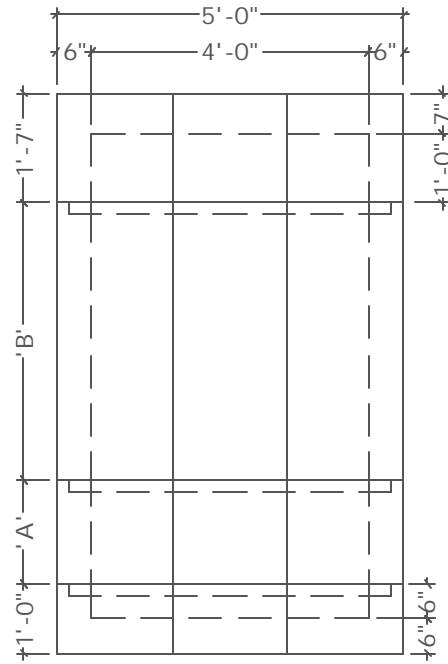
Concrete: 5000psi @ 28 Days  
 Entrained Air: 5% - 9%  
 Design Load: AASHTO HS20  
 Reinforcing:  $f_y = 60,000\text{psi}$  ASTM A615

Notes:

- \*Concrete Cover Available With Various Size Openings
- \*Various Size Knockouts Or Openings As Required
- \*Cast Iron Frame And Covers Available



SECTION VIEW 'A'



SECTION VIEW 'B'

Model No.	A	B	*Height		Weights	Model No.	A	B	*Height		Weights
			Inside	Outside					Inside	Outside	
MH47956	48"	-	5'-6"	6'-7"	14,340#	MH47976	54"	18"	7'-6"	8'-7"	17,310#
MH4796	54"	-	6'-0"	7'-1"	15,075#	MH4798	60"	18"	8'-0"	9'-1"	18,060#
MH47966	60"	-	6'-6"	7'-7"	15,825#	* Additional Heights Available Per Customer Specifications		Cover		4,575#	
MH4797	48"	18"	7'-0"	8'-1"	16,575#			Base		3,825#	