



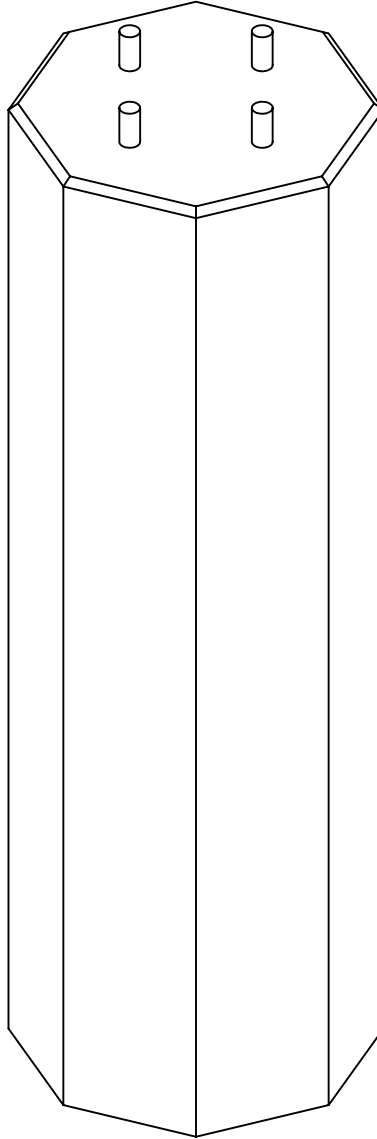
Lakelands Concrete Products, Inc.
7520 East Main St., Lima, NY 14485
Phone: 585-624-1990, Fax: 585-624-2102

Web: www.lakelandsconcrete.com
E-mail: sales@lakelandsconcrete.com

Date: 12/16/10

DWG: LB-OCT

Octagon Lightbase





Lakelands Concrete Products, Inc.
 7520 East Main St., Lima, NY 14485
 Phone: 585-624-1990, Fax: 585-624-2102

Web: www.lakelandsconcrete.com
 E-mail: sales@lakelandsconcrete.com

Date: 12/16/10

DWG: LB-OCT

Octagon Lightbase

Specifications:

Design Criteria: 5000 Psi @28 Days

Entrained Air: 5% - 9%

Reinforcement: BAR-ASTM A615 GR60

WWR-ASTM A185/A497 GR65

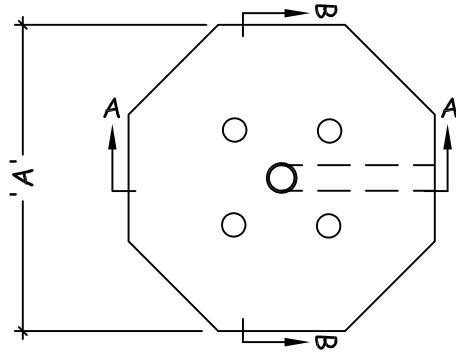
Notes:

* Anchor Bolts Supplied By Lightpole Manufacturer

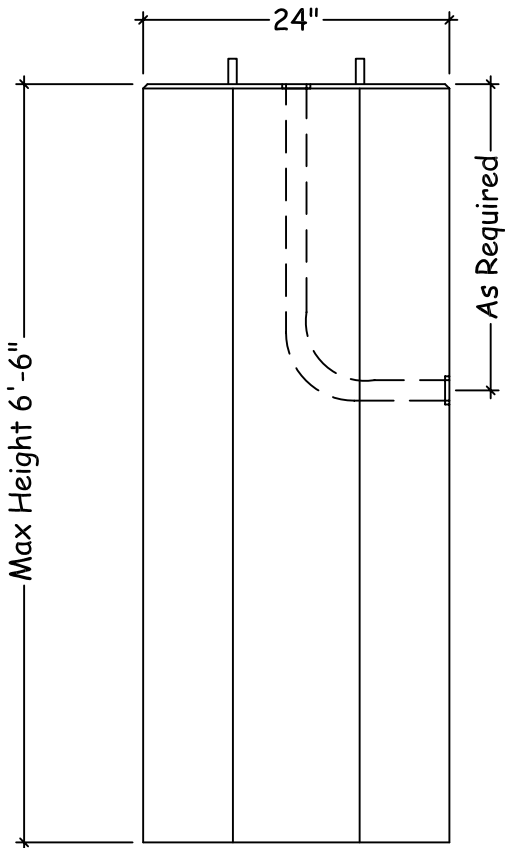
* Size And Type Of Conduit Specified By Contractor

* Steel Reinforcement As Specified

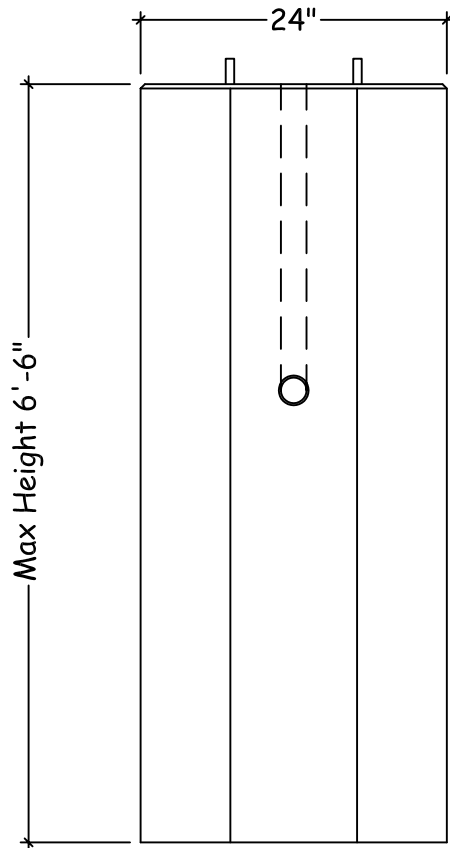
* Base Can Be Poured Shorter



PLAN VIEW



SECTION VIEW 'A'



SECTION VIEW 'B'