



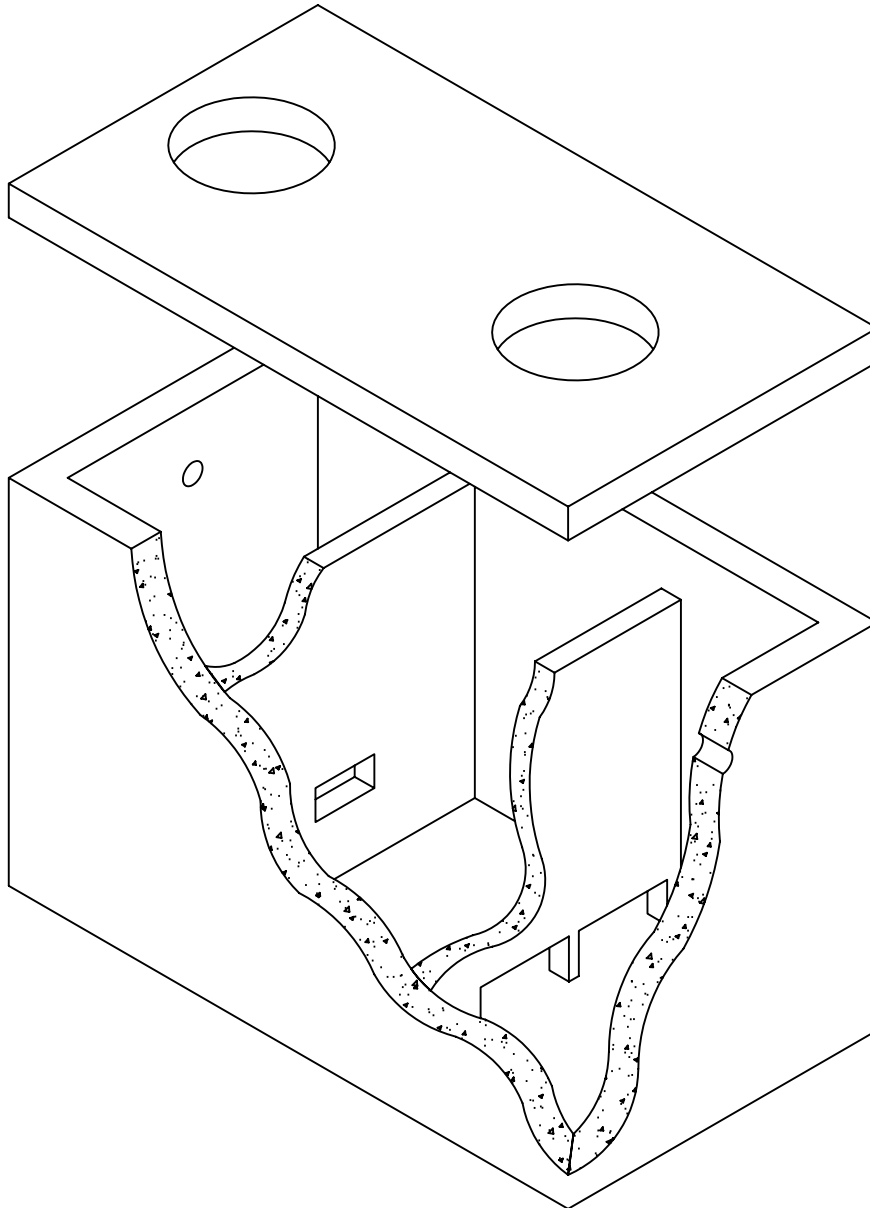
Lakelands Concrete Products, Inc.  
7520 East Main St., Lima, NY 14485  
Phone: 585-624-1990, Fax: 585-624-2102

Web: [www.lakelandsconcrete.com](http://www.lakelandsconcrete.com)  
E-mail: [sales@lakelandsconcrete.com](mailto:sales@lakelandsconcrete.com)

Date: 12/14/10

DWG: GT1050

Grease Trap  
1050 Gallons





Lakelands Concrete Products, Inc.  
 7520 East Main St., Lima, NY 14485  
 Phone: 585-624-1990, Fax: 585-624-2102

Web: www.lakelandsconcrete.com  
 E-mail: sales@lakelandsconcrete.com

Date: 12/14/10

DWG: GT1050

**Grease Trap  
 1050 Gallons**

GT1050  
 GT1050C

\*Contractor to Supply and Install

Inlet- Sanitary Tee Extend Down 30"

Outlet- Sanitary Tee or Zabel Filter  
 Extend to Within 12" of Floor.

Specifications:

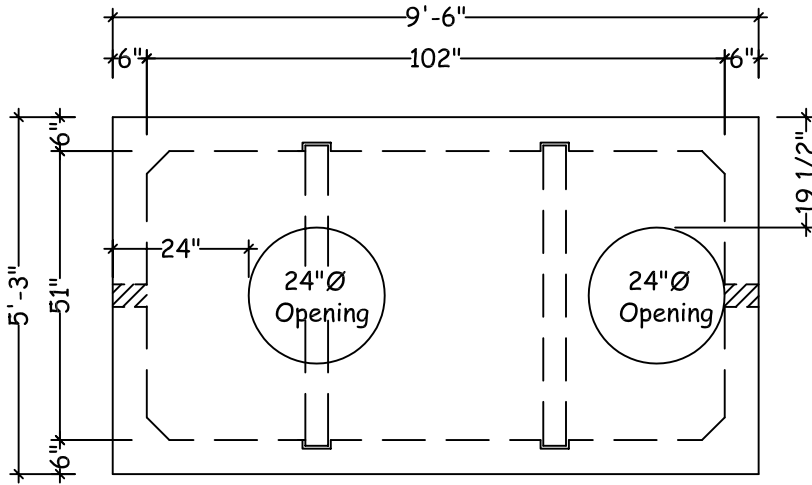
Design Criteria: 5000 Psi @28 Days

Entrained Air: 5% - 9%

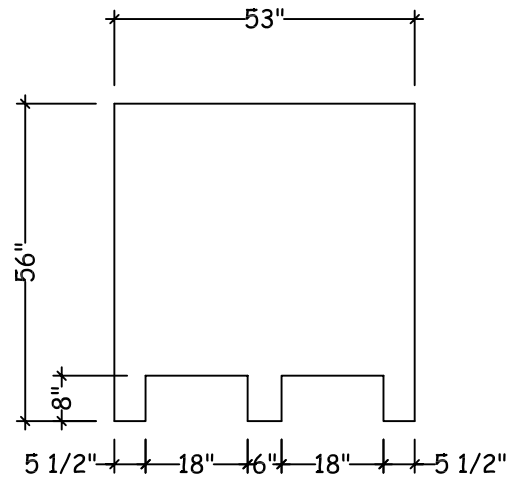
Reinforcement: BAR-ASTM A615 GR60  
 WWR-ASTM A185/A497 GR65

Notes:

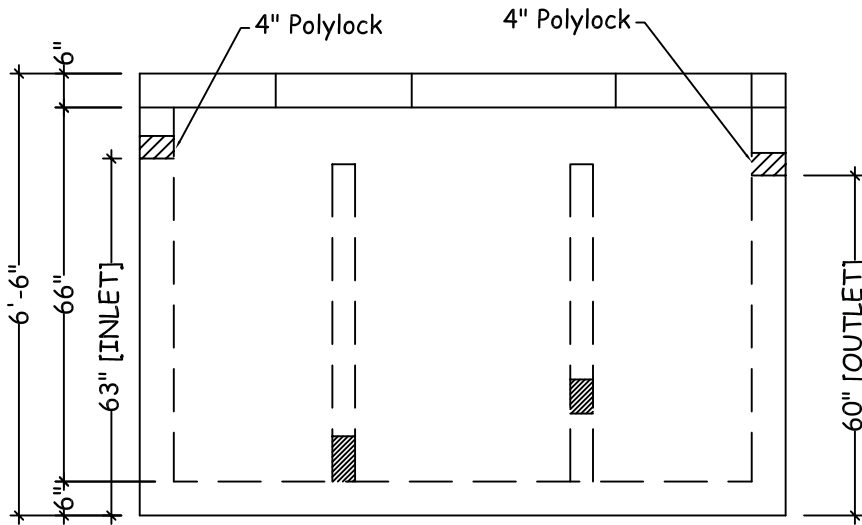
- \*Cast Iron Frame And Covers Available
- \*Zabel Filter Model A300 Recommended



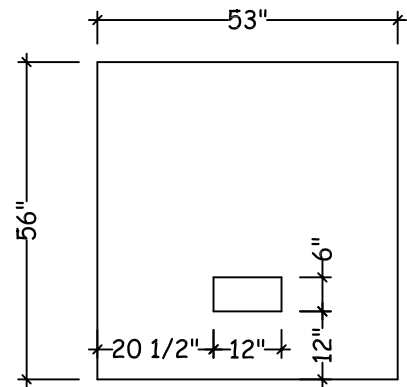
Plan View



Inlet Baffle



Elevation View



Outlet Baffle

**Weights:**  
 Cover: 3740lbs  
 Tank: 13989lbs  
 Inlet B: 900lbs  
 Outlet B: 975lbs