



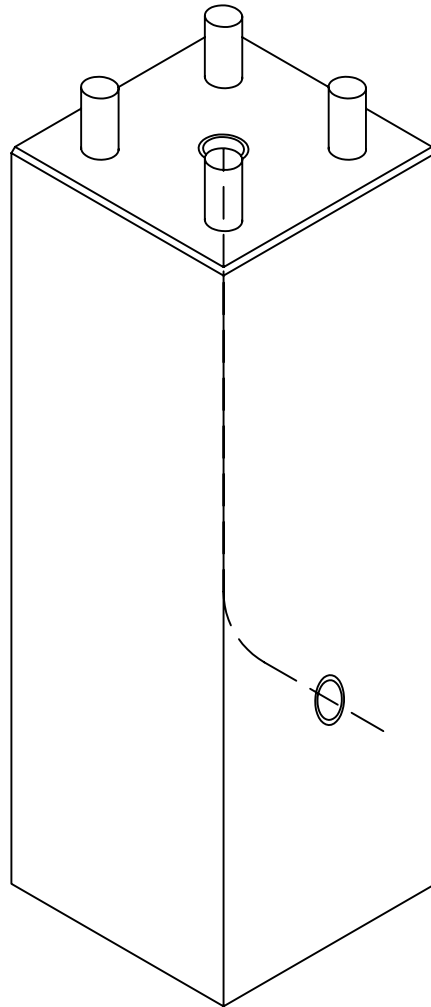
Lakelands Concrete Products, Inc.
7520 East Main St., Lima, NY 14485
Phone: 585-624-1990, Fax: 585-624-2102

Web: www.lakelandsconcrete.com
E-mail: sales@lakelandsconcrete.com

Date: 12/16/10

DWG: LBSQ

Square Lightbase





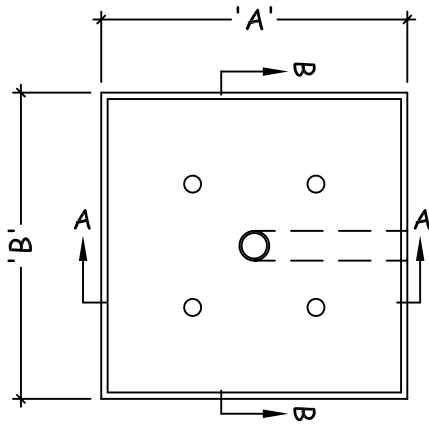
Lakelands Concrete Products, Inc.
 7520 East Main St., Lima, NY 14485
 Phone: 585-624-1990, Fax: 585-624-2102

Web: www.lakelandsconcrete.com
 E-mail: sales@lakelandsconcrete.com

Date: 12/16/10

DWG: LBSQ

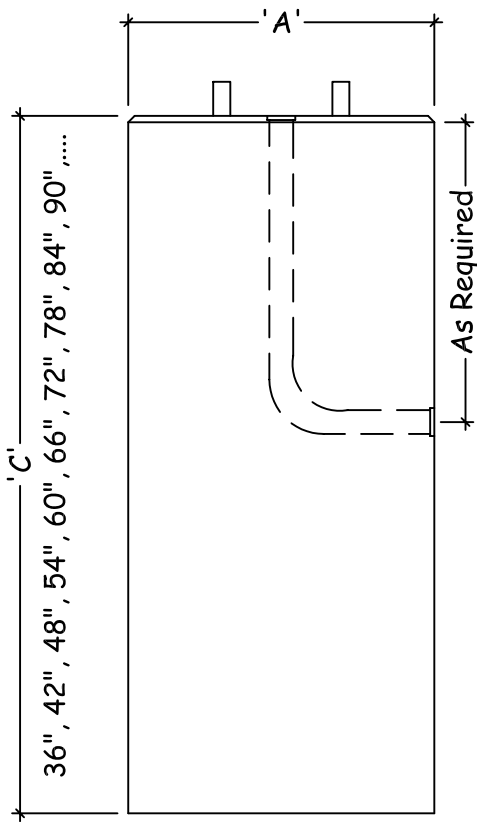
Square Lightbase



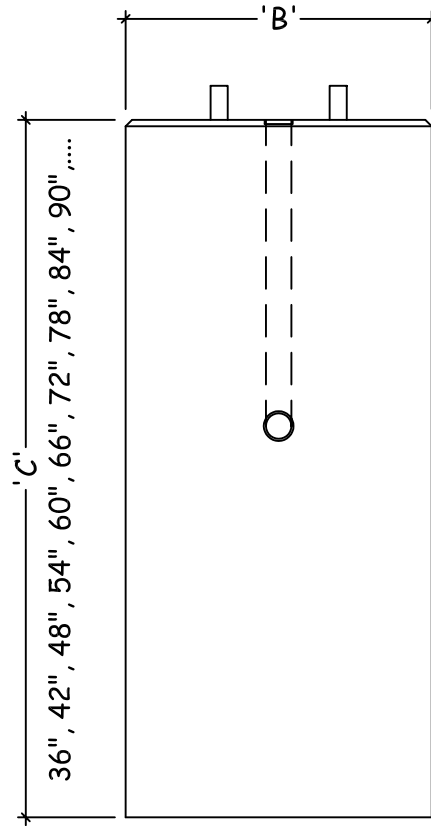
PLAN VIEW

Specifications:
 Design Criteria: 5000 Psi @28 Days
 Entrained Air: 5% - 9%
 Reinforcement: BAR-ASTM A615 GR60
 WWR-ASTM A185/A497 GR65

- Notes:
- * Anchor Bolts Supplied By Lightpole Manufacturer
 - * Size And Type Of Conduit Specified By Contractor
 - * Steel Reinforcement As Specified



SECTION VIEW 'A'



SECTION VIEW 'B'

Model No.	A	B	Model No.	A	B
LB1212	12"	12"	LB2424	24"	24"
LB1616	16"	16"	LB3030	30"	30"
LB1818	18"	18"	LB3636	36"	36"
LB2020	20"	20"			

Dimension 'C' Denotes The Height Of The Lightbase, Lightbase Heights Are Designated In The Model Number By The Last Two Digits Of An Eight Digit Model Number, An Example Is, LB121236, 36 Being The Height Of The Lightbase in Inches