



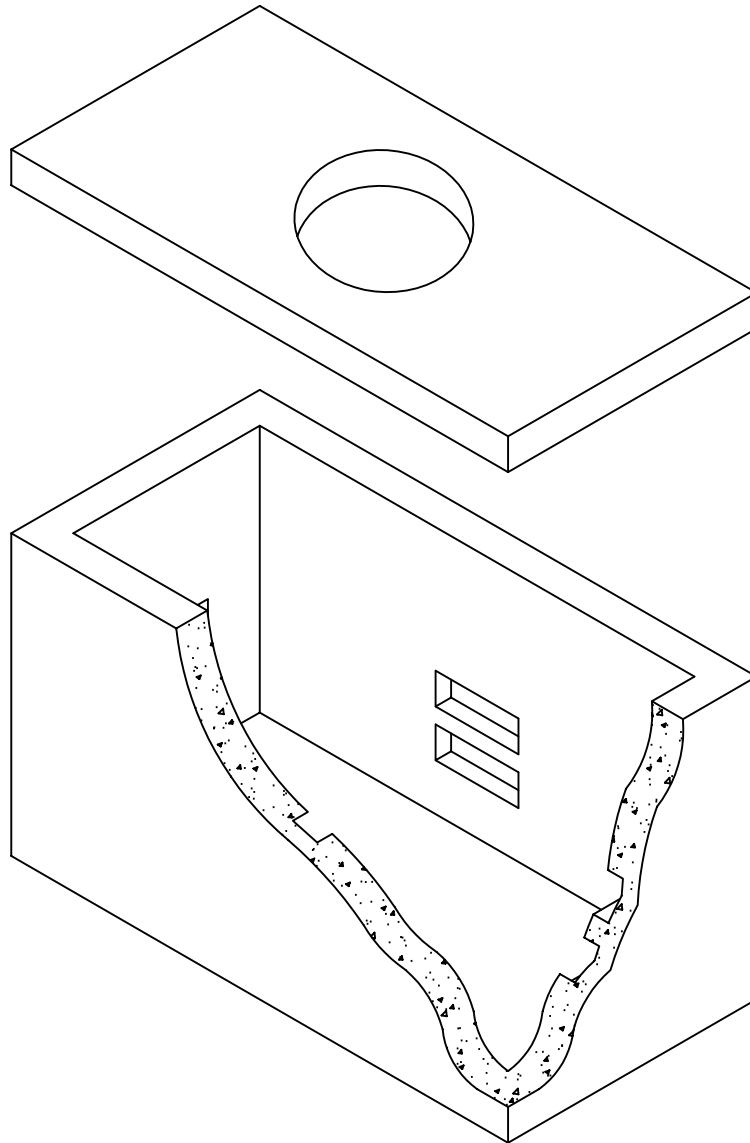
Lakelands Concrete Products, Inc.
7520 East Main St., Lima, NY 14485
Phone: 585-624-1990, Fax: 585-624-2102

Web: www.lakelandsconcrete.com
E-mail: sales@lakelandsconcrete.com

Date: 8/31/09

DWG: PB374-CAT

Stock Pullbox
3'-0" x 7'-0" x 4'-0"





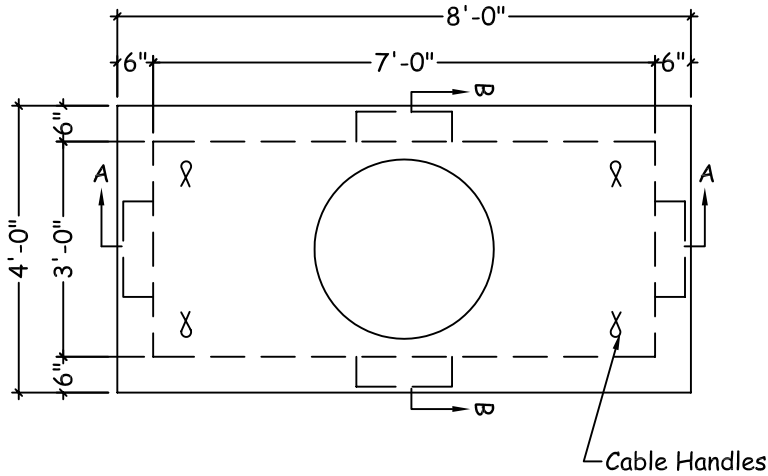
Lakelands Concrete Products, Inc.
7520 East Main St., Lima, NY 14485
Phone: 585-624-1990, Fax: 585-624-2102

Web: www.lakelandsconcrete.com
E-mail: sales@lakelandsconcrete.com

Date: 8/31/09

DWG: PB374-CAT

Stock Pullbox
3'-0" x 7'-0" x 4'-0"



Plan View

Specifications:

Design Criteria: 5000 Psi @28 Days

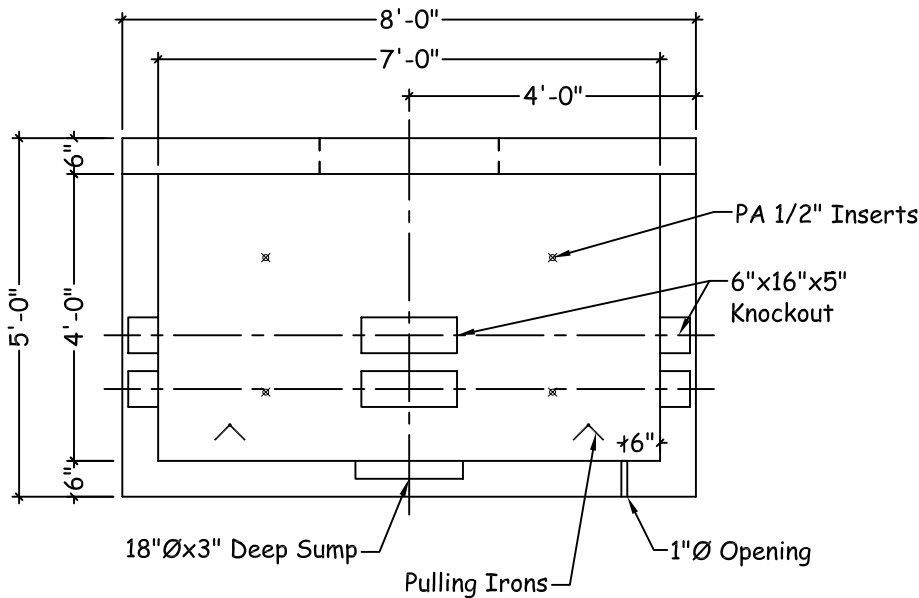
Entrained Air: 5% - 9%

Design Loading: AASHTO HS20-44 With
Less Than 2'-0" Earth Cover

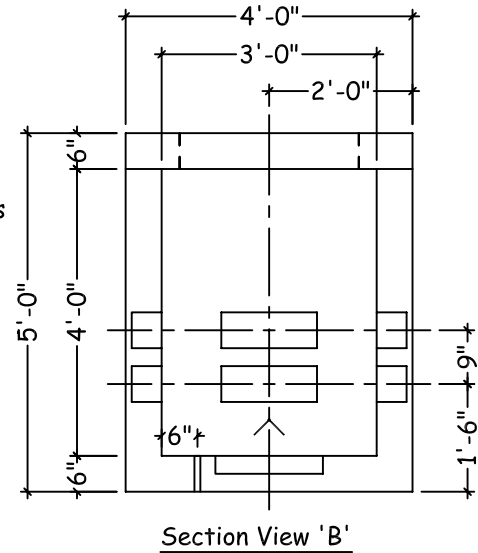
Reinforcement: BAR-ASTM A615 GR60
WWR-ASTM A185/A497 GR65

Notes:

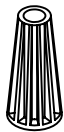
- *Concrete Cover Available With Various Size Openings
- *Various Size Knockouts Or Openings As Required
- *Cast Iron Frame And Covers Available



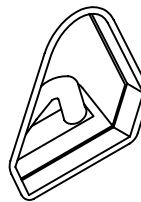
Section View 'A'



Section View 'B'



Pennsylvania Inserts
-1/2" Bolt Diameter
-Stops Corrosion
-2 1/2" Bolt Embedment Depth
-Work Load Strength Of 1,260lbs



Bowco Insert Pulling Iron
-Noncorrosive
-Seven Strand, 1/2"Ø, With An
Ultimate Strength Of 270,000 psi
-Encapsulated By A Rustproof Sleeve
That Slips Over The Steel Rope At
The Hooking Point

Weights:
Box: 7980lbs
Cover: 2035lbs



Lakelands Concrete Products, Inc.
 7520 East Main St., Lima, NY 14485
 Phone: 585-624-1990, Fax: 585-624-2102

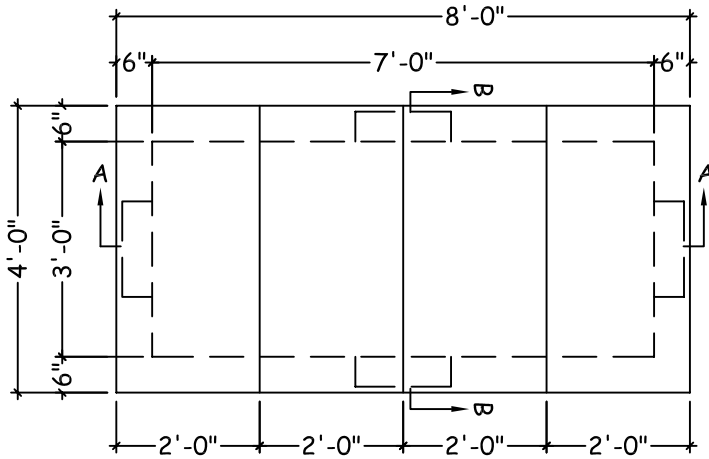
Web: www.lakelandsconcrete.com
 E-mail: sales@lakelandsconcrete.com

Date: 8/31/09

DWG: PB374

Stock Pullbox
 3'-0" x 7'-0" x 4'-0"

PB374
 PBSECT



Plan View

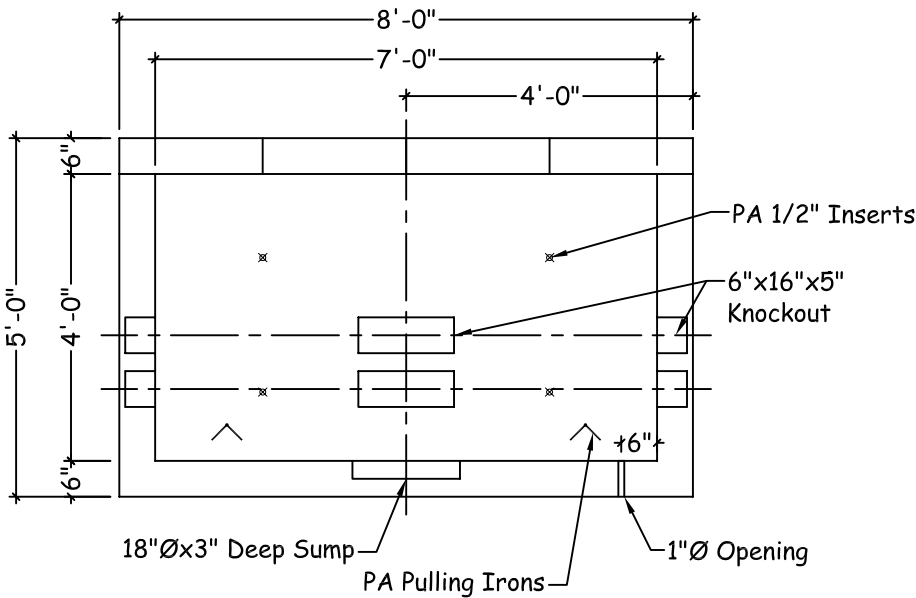
Specifications:

Design Criteria: 5000 Psi @28 Days

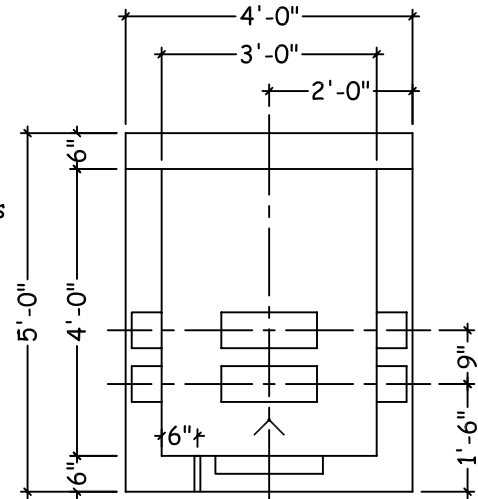
Entrained Air: 5% - 9%

Design Loading: AASHTO HS20-44 With
 Less Than 2'-0" Earth Cover

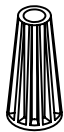
Reinforcement: BAR-ASTM A615 GR60
 WWR-ASTM A185/A497 GR65



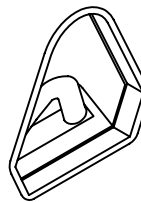
Section View 'A'



Section View 'B'



Pennsylvania Inserts
 -1/2" Bolt Diameter
 -Stops Corrosion
 -2 1/2" Bolt Embedment Depth
 -Work Load Strength Of 1,260lbs



Pennsylvania Insert Pulling Iron
 -Noncorrosive
 -Seven Strand, 1/2"Ø, With An
 Ultimate Strength Of 270,000 psi
 -Encapsulated By A Rustproof Sleeve
 That Slips Over The Steel Rope At
 The Hooking Point

Weights:
 Box: 7980lbs
 Cover: 600lbs ea.