



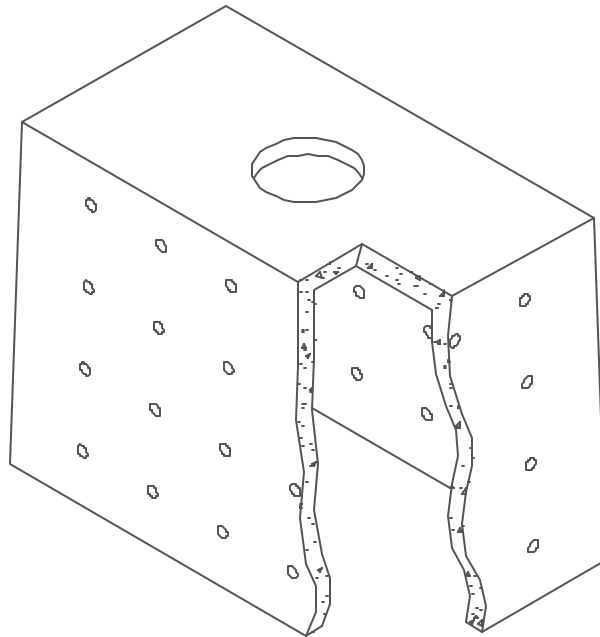
Lakelands Concrete Products, Inc.
7520 East Main St., Lima, NY 14485
Phone: 585-624-1990, Fax: 585-624-2102

Web: www.lakelandsconcrete.com
E-mail: sales@lakelandsconcrete.com

Date: 2/2/01

DWG: LC500

500 Gallon Leaching Chamber





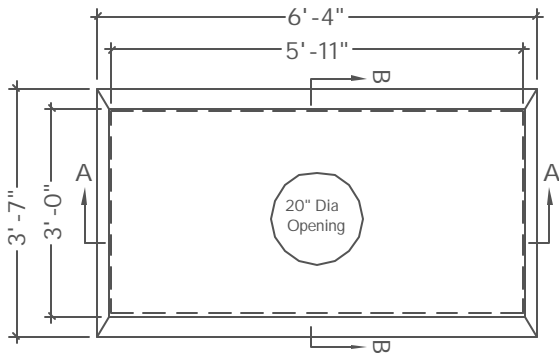
Lakelands Concrete Products, Inc.
7520 East Main St., Lima, NY 14485
Phone: 585-624-1990, Fax: 585-624-2102

Web: www.lakelandsconcrete.com
E-mail: sales@lakelandsconcrete.com

Date: 2/2/01

DWG: LC500

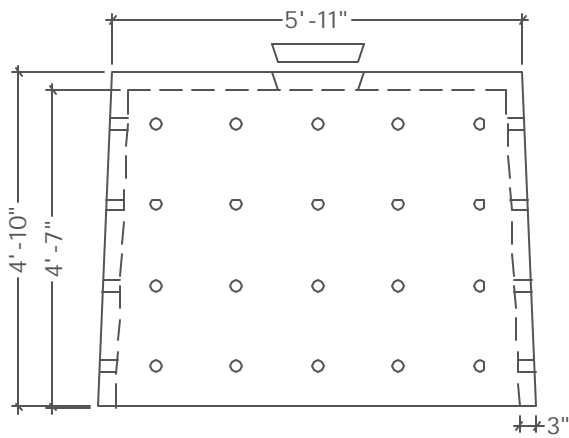
500 Gallon Leaching Chamber



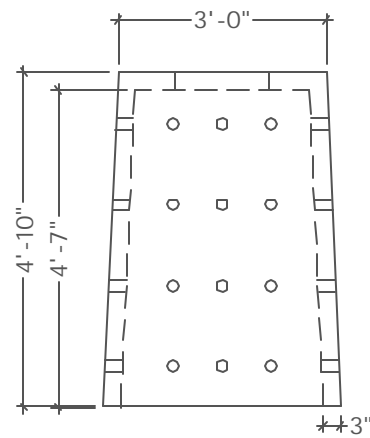
PLAN VIEW

Specifications:

| | |
|----------------|-------------------------|
| Concrete: | 5000psi @ 28 Days |
| Entrained Air: | 5% - 9% |
| Reinforcing: | fy= 60,000psi ASTM A615 |



SECTION VIEW 'A'



SECTION VIEW 'B'

Weight:
Tank: 2400#