



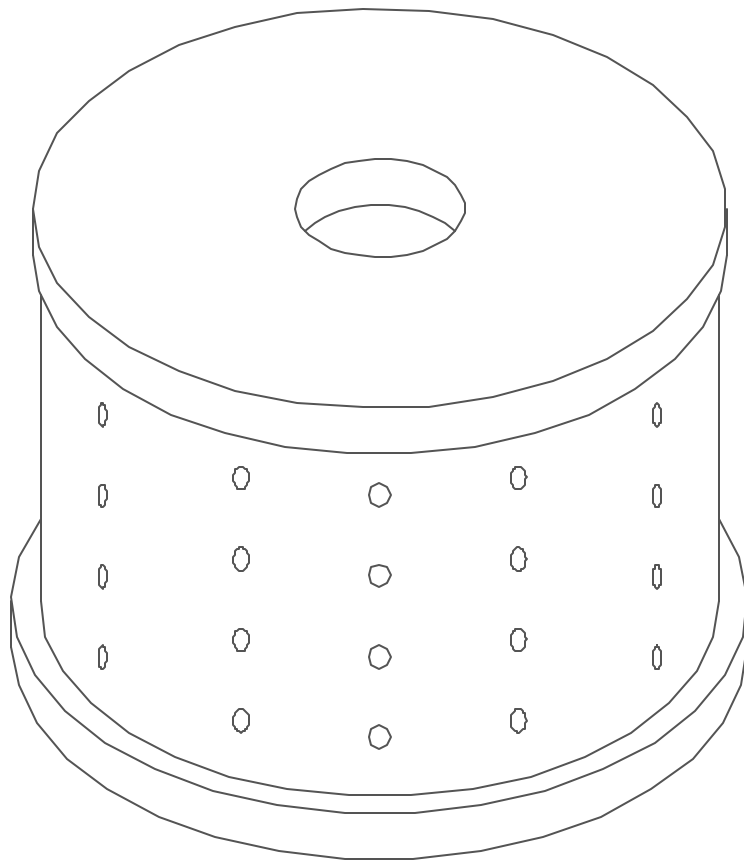
Lakelands Concrete Products, Inc.
7520 East Main St., Lima, NY 14485
Phone: 585-624-1990, Fax: 585-624-2102

Web: www.lakelandsconcrete.com
E-mail: sales@lakelandsconcrete.com

Date: 2/2/01

DWG: LC1745

Leaching Chamber
1745 Gal.





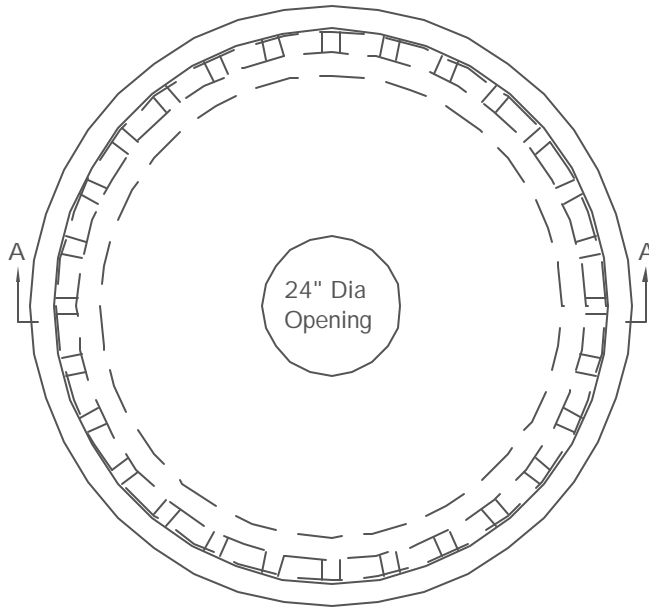
Lakelands Concrete Products, Inc.
7520 East Main St., Lima, NY 14485
Phone: 585-624-1990, Fax: 585-624-2102

Web: www.lakelandsconcrete.com
E-mail: sales@lakelandsconcrete.com

Date: 2/2/01

DWG: LC1745

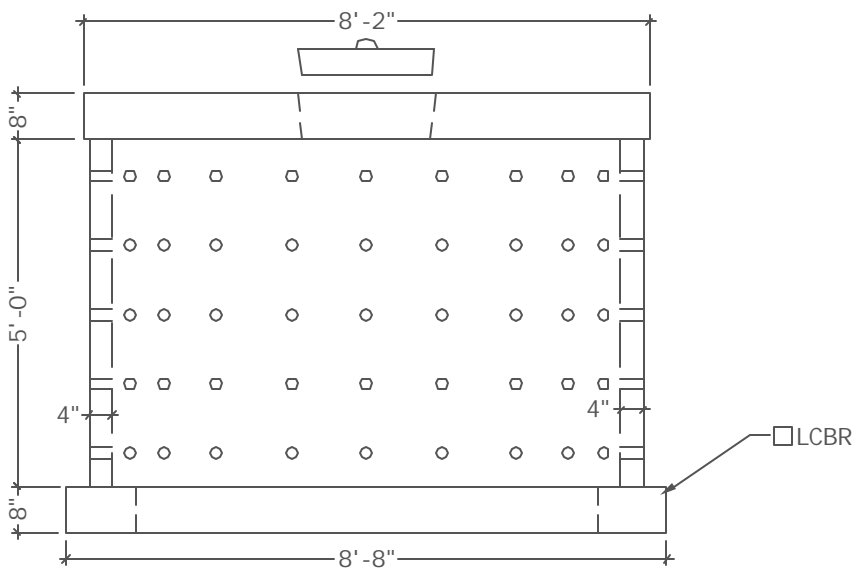
Leaching Chamber
1745 Gal.



PLAN VIEW

Specifications:
Concrete: 5000psi @ 28 Days
Entrained Air: 5% - 9%
Design Load: AASHTO HS20
Reinforcing: fy= 60,000psi ASTM A615

Notes:
*Cast Iron Frame And Grate/Cover Available
*Hole Sizes 1 5/8" x 3 1/8"



SECTION VIEW 'A'

Weight:
Tank And Cover: 10,040#