



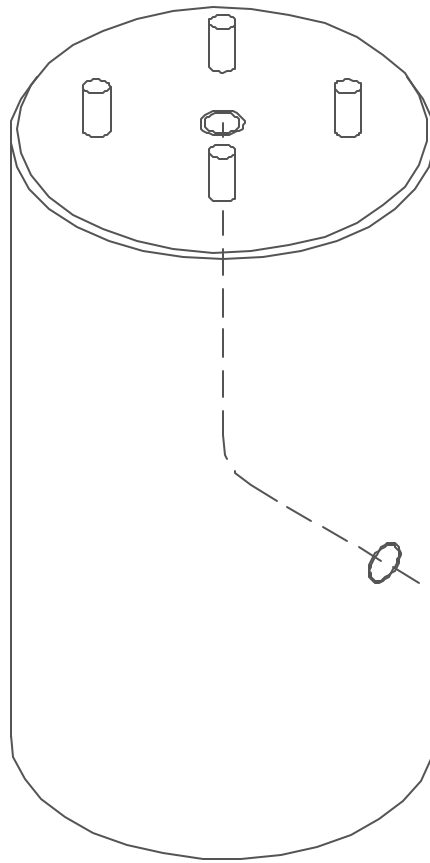
Lakelands Concrete Products, Inc.
7520 East Main St., Lima, NY 14485
Phone: 585-624-1990, Fax: 585-624-2102

Web: www.lakelandsconcrete.com
E-mail: sales@lakelandsconcrete.com

Date: 2/2/01

DWG: LBRD

Round Lightbase





Lakelands Concrete Products, Inc.
 7520 East Main St., Lima, NY 14485
 Phone: 585-624-1990, Fax: 585-624-2102

Web: www.lakelandsconcrete.com
 E-mail: sales@lakelandsconcrete.com

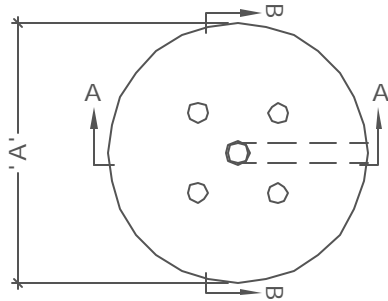
Date: 2/2/01

DWG: LBRD

Round Lightbase

Specifications:

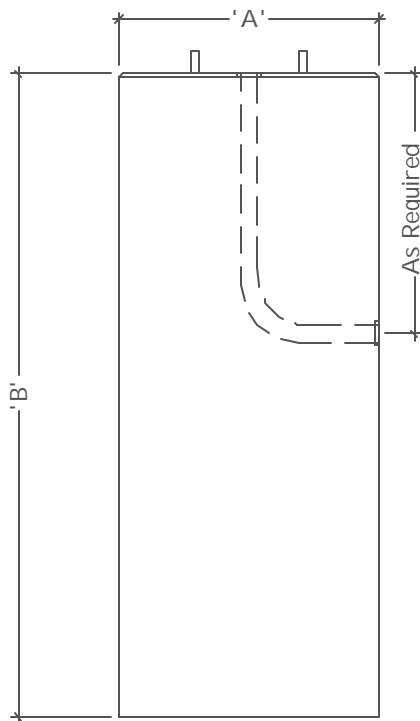
Concrete: 5000psi @ 28 Days
 Entrained Air: 5% - 9%
 Reinforcing: fy= 60,000 psi ASTM A615



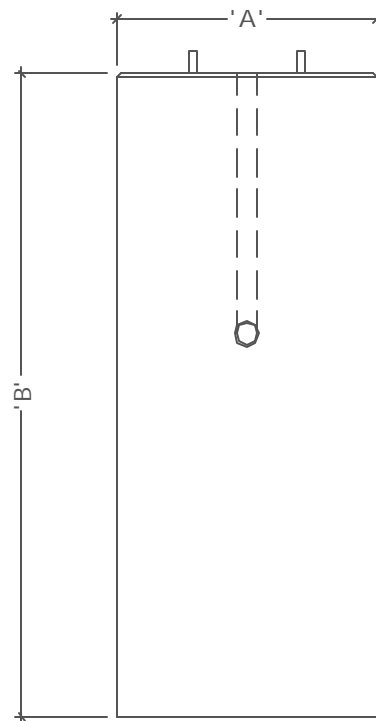
PLAN VIEW

Notes:

- *Anchor Bolts Supplied By Lightpole Manufacturer
- *Size And Type Of Conduit Specified By Contractor
- *Steel Reinforcement As Specified



SECTION VIEW 'A'



SECTION VIEW 'B'

| Model No. | A | B | Model No. | A | B | Model No. | A | B | Model No. | A | B |
|-----------|-----|-----|-----------|-----|------|-----------|-----|-----|-----------|-----|-----|
| LB18D48 | 18" | 48" | LB24D60 | 24" | 60" | LB30D54 | 30" | 54" | LB36D54 | 36" | 54" |
| LB18D54 | 18" | 54" | LB24D66 | 24" | 66" | LB30D60 | 30" | 60" | LB36D60 | 36" | 60" |
| LB18D60 | 18" | 60" | LB24D72 | 24" | 72" | LB30D66 | 30" | 66" | LB36D66 | 36" | 66" |
| LB18D66 | 18" | 66" | LB24D78 | 24" | 78" | LB30D72 | 30" | 72" | LB36D72 | 36" | 72" |
| LB18D72 | 18" | 72" | LB24D84 | 24" | 84" | LB30D78 | 30" | 78" | LB36D78 | 36" | 78" |
| LB18D78 | 18" | 78" | LB24D90 | 24" | 90" | LB30D84 | 30" | 84" | LB36D84 | 36" | 84" |
| LB18D84 | 18" | 84" | LB24D96 | 24" | 96" | LB30D90 | 30" | 90" | LB36D90 | 36" | 90" |
| LB24D48 | 24" | 48" | LB24D120 | 24" | 120" | LB30D96 | 30" | 96" | LB36D96 | 36" | 96" |
| LB24D54 | 24" | 54" | LB30D48 | 30" | 48" | LB36D48 | 36" | 48" | | | |