



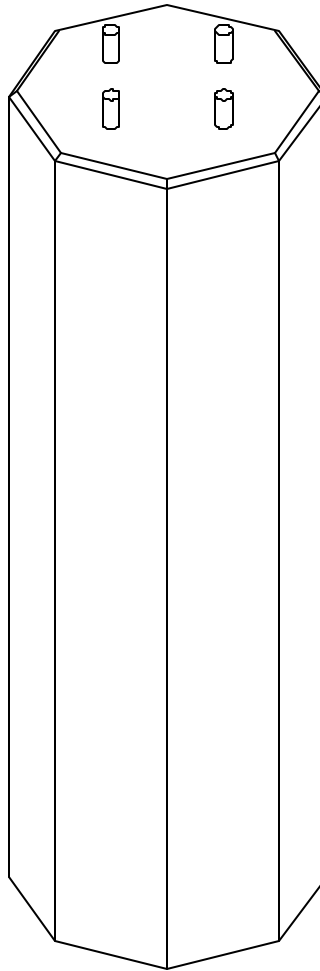
Lakelands Concrete Products, Inc.
7520 East Main St., Lima, NY 14485
Phone: 585-624-1990, Fax: 585-624-2102

Web: www.lakelandsconcrete.com
E-mail: sales@lakelandsconcrete.com

Date: 12/27/02

DWG: LB-OCT

Octagon Lightbase





Lakelands Concrete Products, Inc.
 7520 East Main St., Lima, NY 14485
 Phone: 585-624-1990, Fax: 585-624-2102

Web: www.lakelandsconcrete.com
 E-mail: sales@lakelandsconcrete.com

Date: 12/27/02

DWG: LB-OCT

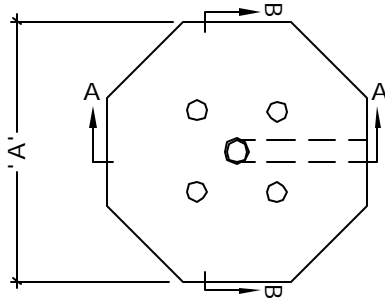
Octagon Lightbase

Specifications:

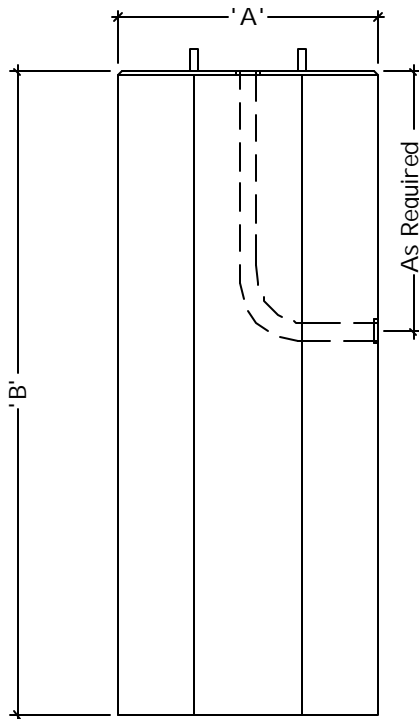
Concrete: 5000psi @ 28 Days
 Entrained Air: 5% - 9%
 Reinforcing: fy= 60,000 psi ASTM A615

Notes:

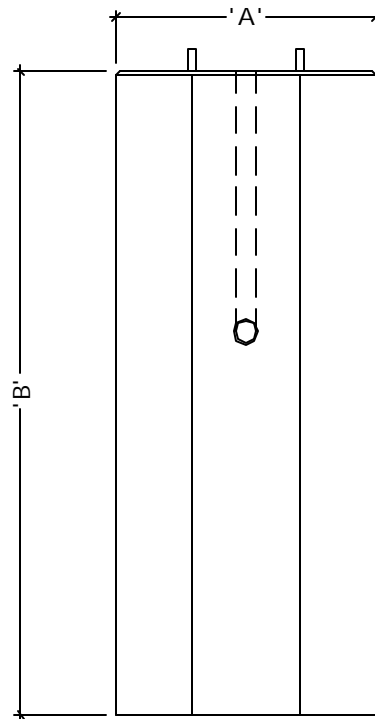
- *Anchor Bolts Supplied By Lightpole Manufacturer
- *Size And Type Of Conduit Specified By Contractor
- *Steel Reinforcement As Specified



PLAN VIEW



SECTION VIEW 'A'



SECTION VIEW 'B'

| Model No. | A | B | Model No. | A | B |
|-----------|-----|-----|-----------|---|---|
| LBOCT78 | 24" | 78" | | | |
| | | | | | |
| | | | | | |
| | | | | | |
| | | | | | |
| | | | | | |
| | | | | | |
| | | | | | |

*Base Can Be Poured Shorter