



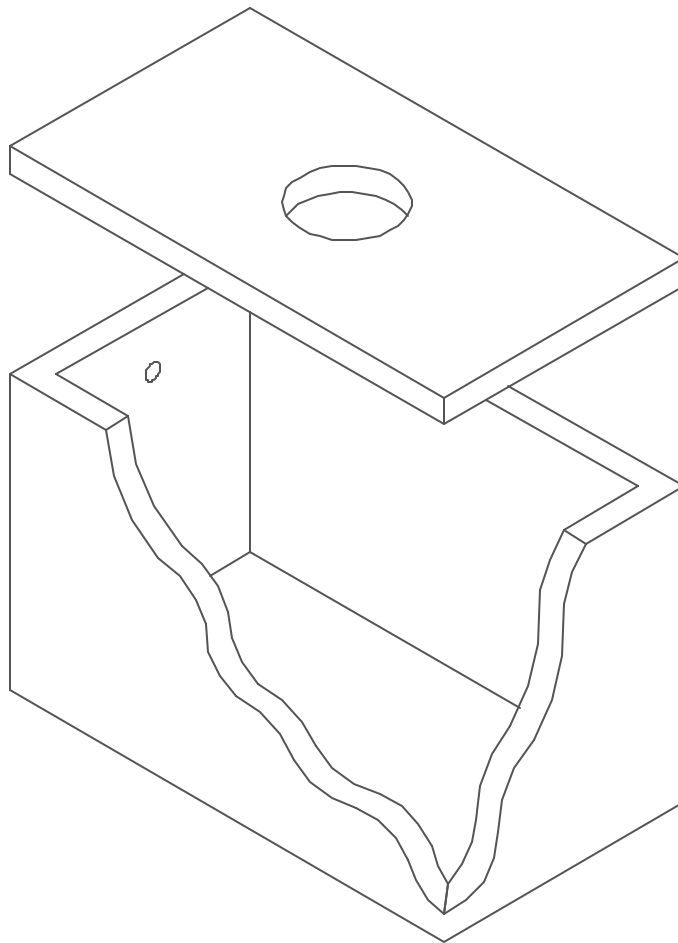
Lakelands Concrete Products, Inc.
7520 East Main St., Lima, NY 14485
Phone: 585-624-1990, Fax: 585-624-2102

Web: www.lakelandsconcrete.com
E-mail: sales@lakelandsconcrete.com

Date: 4/30/01

DWG: HT1200

1200 GAL. HOLDI NG TANK



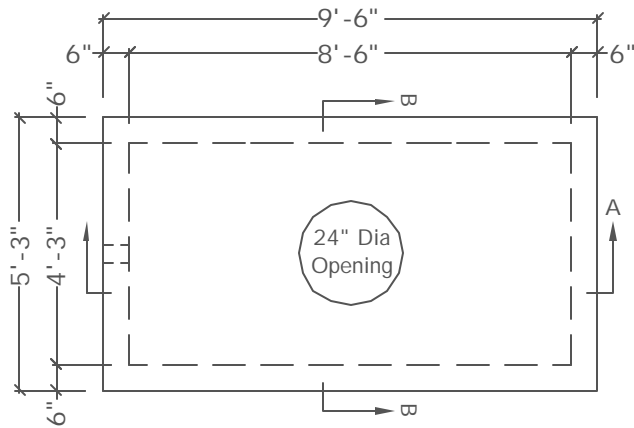


Lakelands Concrete Products, Inc.
7520 East Main St., Lima, NY 14485
Phone: 585-624-1990, Fax: 585-624-2102
Web: www.lakelandsconcrete.com
E-mail: sales@lakelandsconcrete.com

Date: 4/30/01

DWG: HT1200

1200 Gal Holding Tank



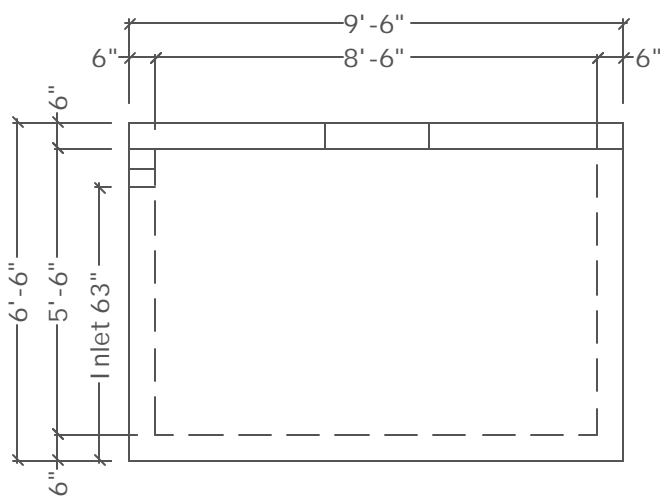
PLAN VIEW

Specifications:

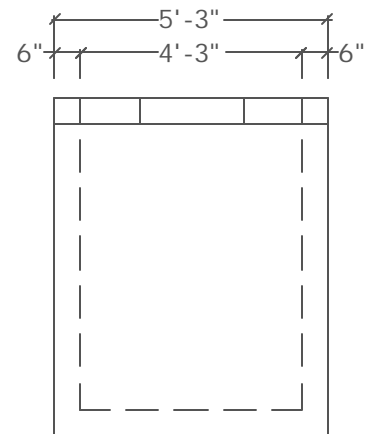
- Concrete: 5000psi @ 28 Days
- Entrained Air: 5% - 9%
- Design Load: AASHTO HS20
- Reinforcing: $f_y = 60,000$ psi ASTM A615

Notes:

*Cast Iron Frame And Covers Available



SECTION VIEW 'A'



SECTION VIEW 'B'

Weights:
Tank: 13,989#
Cover: 3740#