



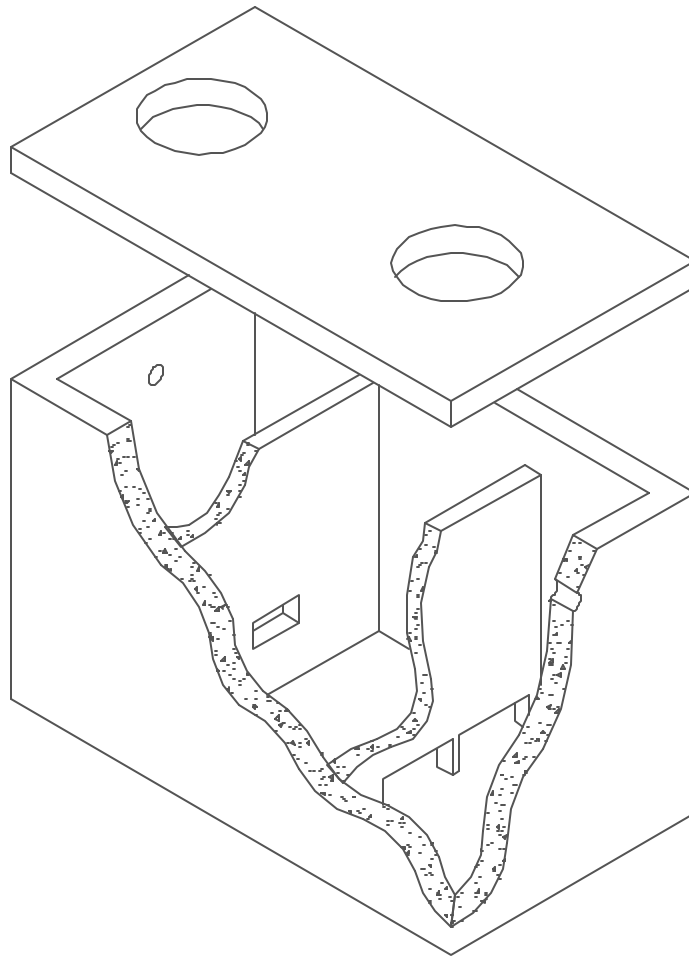
Lakelands Concrete Products, Inc.
7520 East Main St., Lima, NY 14485
Phone: 585-624-1990, Fax: 585-624-2102

Web: www.lakelandsconcrete.com
E-mail: sales@lakelandsconcrete.com

Date: 2/2/01

DWG: GT1050

1050 Gal Grease Trap





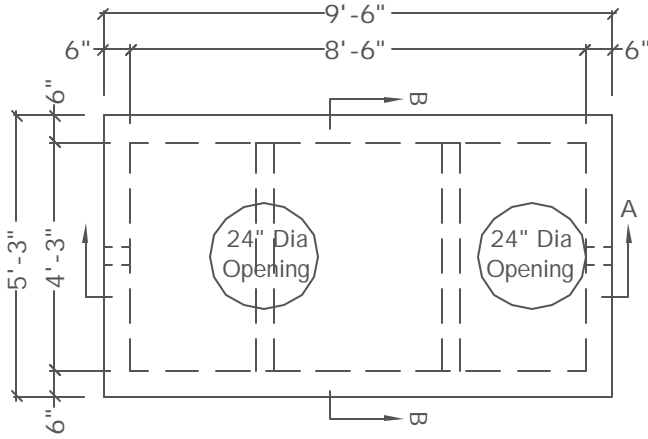
Lakelands Concrete Products, Inc.
 7520 East Main St., Lima, NY 14485
 Phone: 585-624-1990, Fax: 585-624-2102

Web: www.lakelandsconcrete.com
 E-mail: sales@lakelandsconcrete.com

Date: 2/2/01

DWG: GT1050

1050 Gal Grease Trap



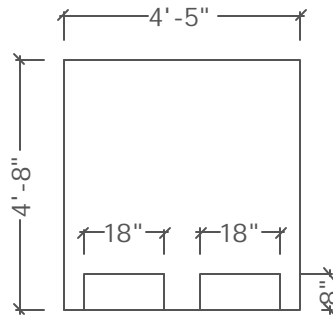
PLAN VIEW

Specifications:

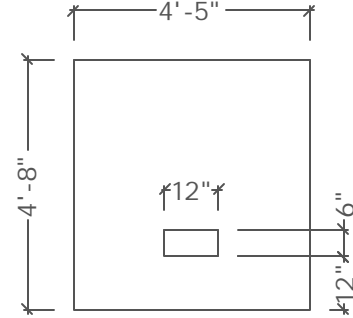
- Concrete: 5000psi @ 28 Days
- Entrained Air: 5% - 9%
- Design Load: AASHTO HS20
- Reinforcing: fy= 60,000psi ASTM A615

Notes:

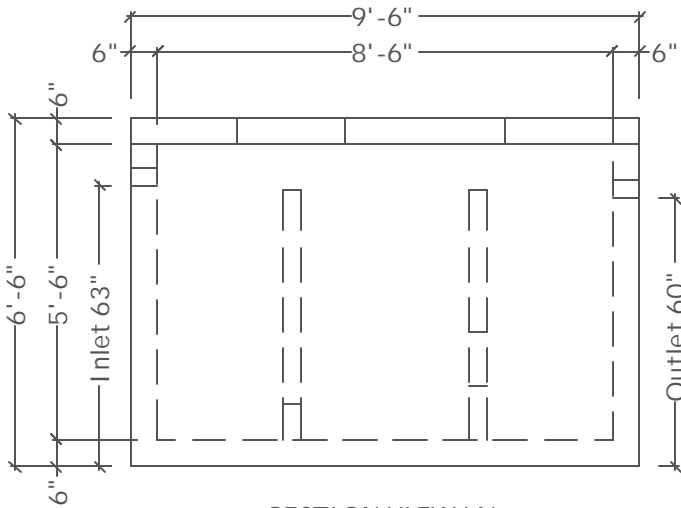
- *Cast Iron Frame And Covers Available
- *Zabel Filter Model A300 Recommended



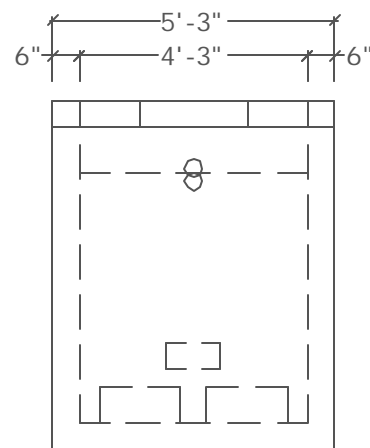
INLET BAFFLE
900 lbs



OUTLET BAFFLE
975 lbs



SECTION VIEW 'A'



SECTION VIEW 'B'

Weights:
 Tank: 13,989#
 Cover: 3740#