



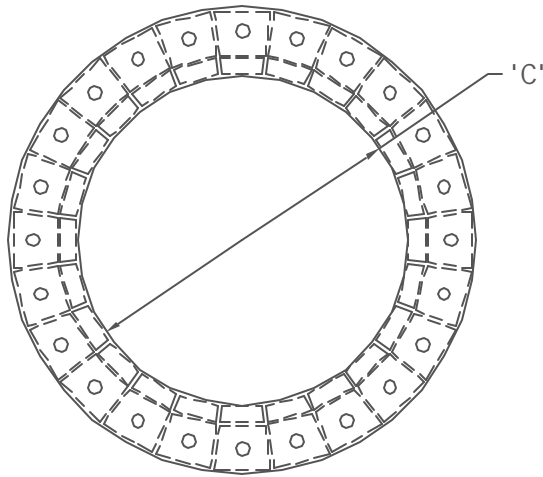
Lakelands Concrete Products, Inc.  
 7520 East Main St., Lima, NY 14485  
 Phone: 585-624-1990, Fax: 585-624-2102

Web: [www.lakelandsconcrete.com](http://www.lakelandsconcrete.com)  
 E-mail: [sales@lakelandsconcrete.com](mailto:sales@lakelandsconcrete.com)

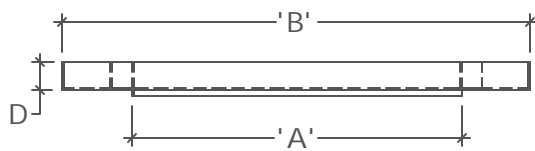
Date: 2/2/01

DWG: GR-Poly

HDPE Grade Ring  
 (High Density Polyethylene)

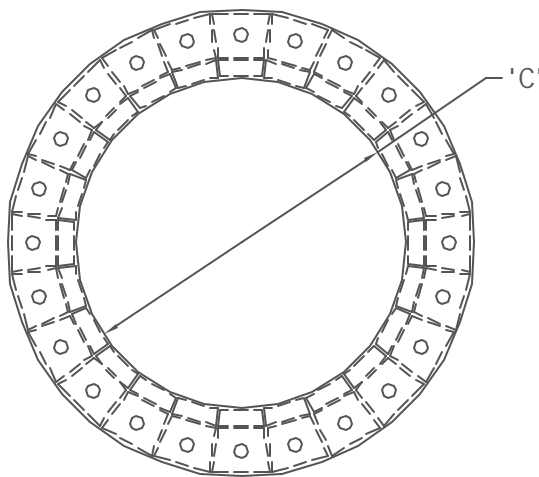


Cone Size	A	B	C
GRP-24	23 3/4"	33 1/2"	23 1/4"
GRP-27	26 3/4"	36 1/2"	26 1/4"
GRP-30	29 3/4"	39 1/2"	29 1/4"
GRP-36	35 3/4"	45 1/2"	35 1/4"

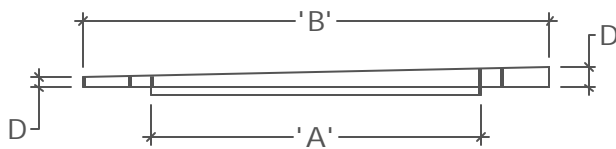


Polyethylene Grade Ring  
 Flat Design

Cone Size	Dimension D			
GRP-24	1 1/4"	1 1/2"	2"	4"
GRP-27	1 1/4"	1 1/2"	2"	4"
GRP-30	1 1/2"	2 1/4"	4"	
GRP-36	1 1/2"	2 1/4"	4"	



Cone Size	A	B	C
GRP-24	23 3/4"	33 1/2"	23 1/4"
GRP-27	26 3/4"	36 1/2"	26 1/4"
GRP-30	29 3/4"	39 1/2"	29 1/4"
GRP-36	35 3/4"	45 1/2"	35 1/4"



Polyethylene Grade Ring  
 Wedge Design

Cone Size	Dimension D
GRP-24	3/4" To 1 1/4"
GRP-27	3/4" To 1 1/4"
GRP-30	1 1/2" To 2 1/4"
GRP-36	1 1/2" To 2 1/4"