



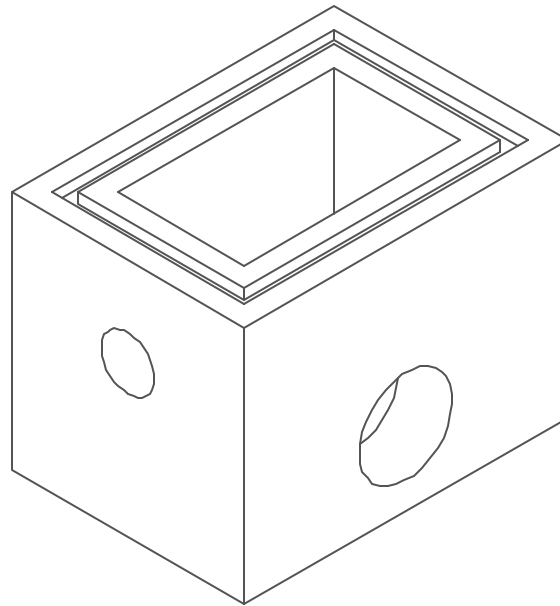
Lakelands Concrete Products, Inc.  
7520 East Main St., Lima, NY 14485  
Phone: 585-624-1990, Fax: 585-624-2102

Web: [www.lakelandsconcrete.com](http://www.lakelandsconcrete.com)  
E-mail: [sales@lakelandsconcrete.com](mailto:sales@lakelandsconcrete.com)

Date: 2/2/01

DWG: CB193230

City Of Rochester Catch Basins  
1' - 6 $\frac{15}{16}$ " x 2' - 8 $\frac{1}{2}$ " x 2' - 6"





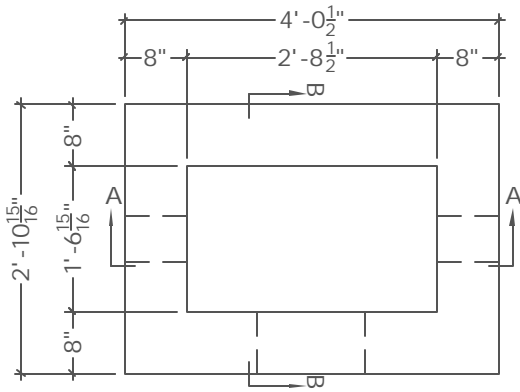
Lakelands Concrete Products, Inc.  
7520 East Main St., Lima, NY 14485  
Phone: 585-624-1990, Fax: 585-624-2102

Web: [www.lakelandsconcrete.com](http://www.lakelandsconcrete.com)  
E-mail: [sales@lakelandsconcrete.com](mailto:sales@lakelandsconcrete.com)

Date: 2/2/01

DWG: CB193230

City Of Rochester Catch Basins  
1'-6<sup>15</sup>/<sub>16</sub>" x 2'-8<sup>1</sup>/<sub>2</sub>" x 2'-6"



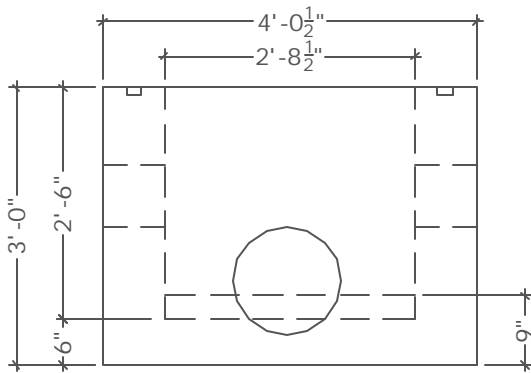
Plan View

Specifications:

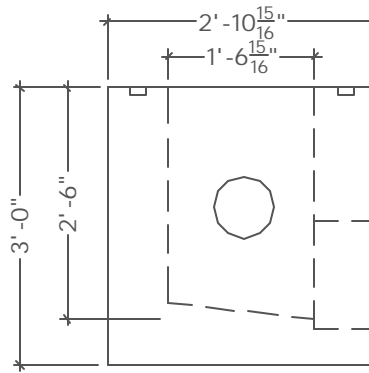
Concrete: 5000psi @ 28 Days  
Entrained Air: 5% - 9%  
Reinforcing: fy= 60,000psi ASTM A615  
Design Loading: HS20-44 @ Zero Earth Cover

Notes:

- \*Various Size Knockouts Or Openings as Required
- \*Cast I ron Frame And Grates Available



Elevation View 'A'



Elevation View 'B'

Weights:  
Box: 3785#