



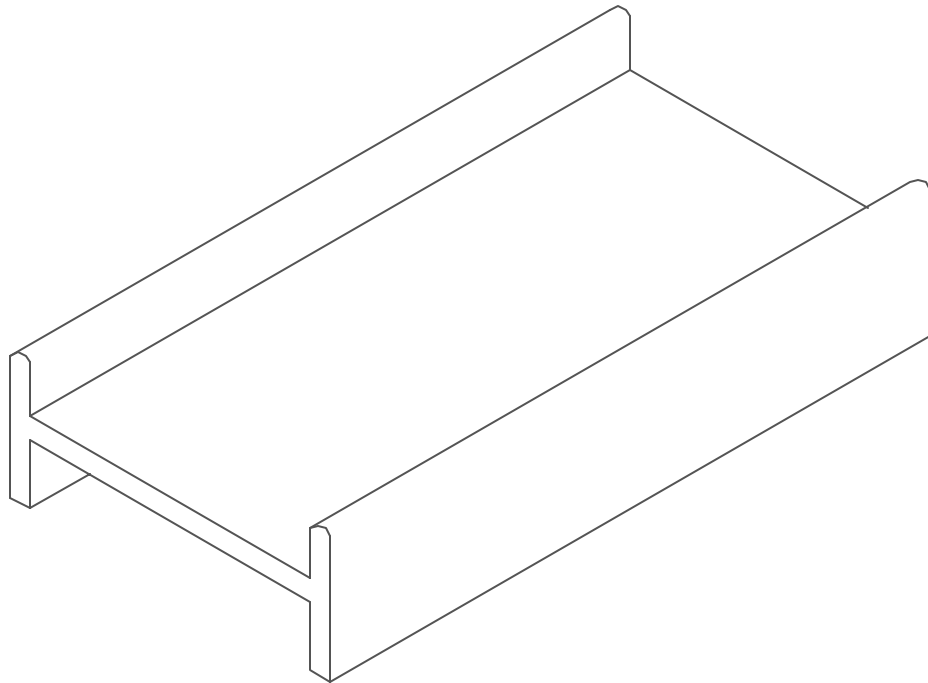
Lakelands Concrete Products, Inc.
7520 East Main St., Lima, NY 14485
Phone: 585-624-1990, Fax: 585-624-2102

Web: www.lakelandsconcrete.com
E-mail: sales@lakelandsconcrete.com

Date: 2/2/01

DWG: AGHB

H-Bunk





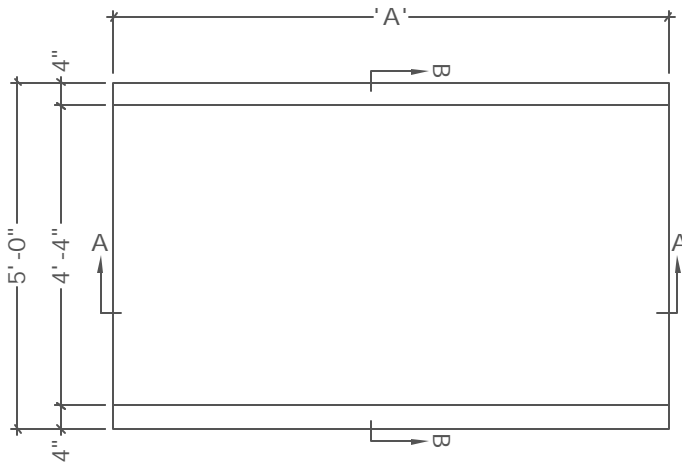
Lakelands Concrete Products, Inc.
 7520 East Main St., Lima, NY 14485
 Phone: 585-624-1990, Fax: 585-624-2102

Web: www.lakelandsconcrete.com
 E-mail: sales@lakelandsconcrete.com

Date: 2/2/01

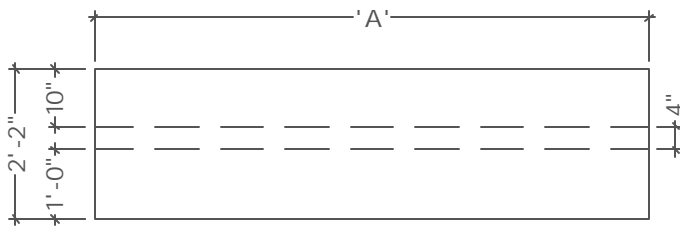
DWG: AGHB

H-Bunk

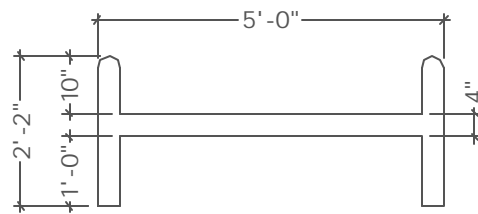


PLAN VIEW

Specifications:
 Concrete: 5000psi @ 28 Days
 Entrained Air: 5% - 9%
 Reinforcing: fy= 60,000psi ASTM A615



SECTION VIEW 'A'



SECTION VIEW 'B'

Model No.	A	Weight
AGHB-8	8'-0"	3174#
AGHB-10	10'-0"	3970#
AGHB-12	12'-0"	4760#